

Continued from Page 12

Congratulations to all the ICAMS Approved Curly Horses!



ICAMS Approved Spar's Barefoot Contessa 575-D



ICAMS Approved BNC Ellaree's Butterfly 388-D



ICAMS Approved Sandman's Magic 215-D



ICAMS Approved JT's Lobodacious NACHR 1358-D



ICAMS Approved DCC Drifter NACHR 50-D



If your horse is ICAMS Approved and your photo was not posted, please send a photo to the ICHO Office.

The Great Horse Breeds Book

This is a very well done breeds book featuring our ICHO Curlies! This book makes a great gift and with Christmas fast approaching follow this link to order your copy.



Retails for \$29.95 plus \$5.00 Priority Shipping through ICHO. On sale now for \$25 + \$5 Shipping and handling..



NEWS- Oct 2013 - Gait Study in Sweden at the University is continuing!

Lene has informed us the gait gene study is continuing in Sweden at the university and they need more gaited Curly hair samples. If you submitted hair samples already, do not submit the same horses, but you can submit new gaited Curlies. You will need to follow their instructions for hair samples and fill out their questionnaire forms found on our webpage: <http://ichocurlyhorses.weebly.com/gait-gene-study.html>

When the university contacts you with the gait gene results, please fwd those results to the ICHO office as this is part of our continuing gait study as well. We do not have a real deadline for this, so you can send all samples and questionnaire to the ICHO Office- HC 31 Box 102A, Williamsburg, NM 87942

Please send in your gaited Curlies hair samples, there is no cost to do this.

Thanks! ICHO Office

NACHIP INSPECTED CURLY HORSES
Qualified for NACHIP Registration Seal

NACHIP ID	NACHIP EVENT ID	ENTRY	NAME	NACHR.	NACHR DIVISION
51	AGM 2007 KY	5	*DCC FIRE AND ICE	583	D
7	AGM 2006	1	*E.G. Deva Pockets	734	D
15	NWI 2007	2	*GF Spar-Larka	124	D
29	Jondra 2006	13	A M BUENTSMO	752	D
30	Jondra 2006	14	AL MARAH WITAN HIT	761	D
35	Jondra 2006	19	AUSTIN THYME	771	D
32	Jondra 2006	16	AUSTIN WARRIOR	773	D
60	AGM 2008	6	Bergen Lisa	786	S
58	AGM 2008	4	Bergen Montana	521	D
59	AGM 2008	5	Bergen Penny	795	D
31	Jondra 2006	15	BIT-O-WY KOI	765	S
8	AGM 2006	2	CHASE A DREAM	809	D
54	AGM 2007 KY	8	Chips Li'l Lightening Bolt	1054	D
13	AGM 2006	7	CIMARRON CIN	859	D
20	NWI 2007	7	CLASSIC DREAMS SUNDROP	117	D
5	Jondra 2006	5	CYPRESS CURLY BABE	757	D
16	NWI 2007	3	DCC DRIFTER	50	D
10	AGM 2006	4	ECHO GLEN MAYBELLE	861	D
11	AGM 2006	5	ECHO GLEN QUINN	858	D
12	AGM 2006	6	ECHO GLEN ROSE	860	D
48	AGM 2007 KY	2	GCF SPARTAGON	1000	D
14	NWI 2007	1	GCF VESSPAR	1022	D
47	AGM 2007 KY	1	GET OUT OF DODGE	853	D
69	AGM 2009 FL	8	Hero's Chocolate Liss	255	D
19	NWI 2007	6	JESTA RIPPLE	887	S
39	Jondra 2006	23	JONDRA BOREAL MOON	758	D
44	Jondra 2006	28	JONDRA CARRY ON DIGGER	760	D
25	Jondra 2006	9	JONDRA DMC DREAMCATCHER	767	D
38	Jondra 2006	22	JONDRA DMC FRANKLY AWSOME	772	D
6	Jondra 2006	6	JONDRA DMC GOLDEN RAE	193	D
26	Jondra 2006	10	JONDRA DMC MADELINE	769	D
4	Jondra 2006	4	JONDRA DMC MYSTIQUE	197	D

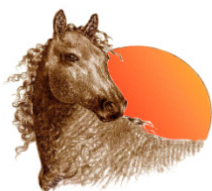
Continued on page 15

NACHIP INSPECTED CURLY HORSES - cont. from page 14

NACHIP	NACHIP	ENTRY	NAME	NACHR.	NACHR
41	Jondra 2006	25	JONDRA DMC NORTHERN FRONTIER	764	D
27	Jondra 2006	11	JONDRA DMC PRISCILLA	200	D
28	Jondra 2006	12	JONDRA DMC RAYNBOW CONNECTION	202	D
34	Jondra 2006	18	JONDRA DMC SUNCATCHER	768	D
46	Jondra 2006	30	JONDRA DUKE OF CURL	763	D
42	Jondra 2006	26	JONDRA GOLD DIGGER	770	D
36	Jondra 2006	20	JONDRA HARVEST MOON	754	D
45	Jondra 2006	29	JONDRA LUNA	766	D
37	Jondra 2006	21	JONDRA LUNAR FLARE	775	D
40	Jondra 2006	24	JONDRA MOONWALK	759	D
43	Jondra 2006	27	JONDRA MYSTICAL MOON	756	D
72	AGM 2009 FL	10	JT's Colt 45 Peacemaker	256	D
71	AGM 2009 FL	2	JT's Lobodacious	1358	D
70	AGM 2009 FL	1	JT's Smokey Spirit	1657	S
18	NWI 2007	5	KIOWA BEAUTY	434	D
3	Jondra 2006	3	KRISPY KRUNCH	755	D
23	Jondra 2006	7	LS BABE	762	D
50	AGM 2007 KY	4	LV MAX'S COMANCHE	667	D
57	AGM 2008	3	RC Rosies Blaze	1031	D
66	NWI2009	10	RCR Beautys Peppermint Patty	1099	D
67	NWI2009	11	RCR BUFFALO JILL	1098	D
68	AGM 2010 NV	1	Red Lad	30	D
62	NWI2009	4	Sadies April Fools Daye	969	D
55	AGM 2008	1	Sandmans Magic	215	D
21	NWI 2007	8	SILVIE ROSE OF SHARON	965	D
64	NWI2009	7	SLL Wiladys Lightning Storm	1101	D
65	NWI2009	9	SLL Willys Duchess	1102	D
56	AGM 2008	2	SPARS BAREFOOT CONTESSA	575	D
1	Jondra 2006	1	THE AUSTIN DUN	110	D
9	AGM 2006	3	WALKERS KALA B	862	D
2	Jondra 2006	2	WARRIOR FRANNIE	99	D
33	Jondra 2006	17	WARRIOR SEDRICK	774	D
22	NWI 2007	9	WWW MARVS MIRACLE	966	D
17	NWI 2007	4	WWW THE HOSS	869	D
24	Jondra 2006	8	Z SILKEN	753	S



APPLICATION For ICAMS and/or NACHIP Seals



ICHO, HC 31 Box 102A, Williamsburg, NM 87942

office@curlyhorses.org ichocurlyhorses.org

1. Your Curly horse must be ICHO registered and inspected in North America by NACHIP to apply for a NACHIP Seal.

2. Your Curly horse must be ICHO registered, DNA typed and inspected with approved scores to be ICAMS accepted.

You may apply for both at same time if your horse qualifies. You may send DNA form & fee when applying for ICAMS.

Horses Name _____ Reg # _____ Sex _____

My horse was inspected on date: _____ at
(location) _____

With final score of _____

Include score sheet or contact the office to be sure your horse is on file. All other country inspections must include a copy of the inspection with scores to apply for ICAMS seal.

I am applying for a NACHIP seal _____

I am applying for an ICAMS seal _____ (scores must be stallions 70% and up, geldings and mares 60% and up and horse must be DNA typed with UKY or a copy of DNA from other lab with \$10.00 recording fee) *If your horse is NACHIP inspected and approved for ICAMS you will have both seals applied.*

You must send the original ICHO/NACHR Registration Certificate, with you listed as current owner, to have the seals placed on your cert. Certificate will be returned with seals placed for all those that qualify. There is no fee required. (You may apply for transfer at same time, include transfer fee and transfer form signed by seller and date of sale.)

Send this form for each horse, supporting documents and the original certificate to:

ICHO Office, HC 31 Box 102A, Williamsburg, NM 87942

Your Name and mailing address:

Name:

Address:

AGM *continued from page 7*

about such a gathering to know that the group purports themselves in such a way as to embrace one and all as equals and compatriots. It was easy to have an opinion and all agreed to respectfully agree to disagree if that was the outcome.

My stay was for two short nights and one day but much was packed into that time. Cheryl embraced the "International" of the ICHO and had themed meals from various countries. I had dinner in France, breakfast in America, lunch in historic gold and silver boom country, dinner in Italy and breakfast in Austria. Stories of curly horse exploits, the groups history and its hopes for the future were laced throughout.

Discussion was had with Texas and Minnesota folks via conference call about the possibility of joining the ABC and the ICHO registries. One of the main arguments is that this would save folks money as they would only have to be a member of one registry not two. Further, the discussion wound around the fact that the ABC has opened their registry to Mustang Curlies—in a separate book. However, my understanding is that domestic Curlies of unknown parentage are still exempted from ABC while they are accepted in the ICHO.

The ICHO members agreed to take the information back to the Board for further discussion.

Unfortunately, I had to leave for a family obligation after the conference call so I missed out on the trek to Wolfcreek Pass, Treasure Falls and the hot springs. I must say that no cowboy I ever knew ate like the pictures show—candlelight, tablecloth and good stoneware.

To all who made my time so informative and fun—THANK YOU!

Ellen; Bit-O-Wy Curlies



It was a joy meeting with ICHO members and sharing ideas and thoughts in the relaxing, beautiful atmosphere of the San Juan mountains, CO. The gorgeous mountains were fully appreciated with a morning train ride along narrow precipices and mountain paths that provided the best views ever!

Quaint shopping at this high elevation makes a fella sleepy.

Mule packing demonstrations provided another avenue for mountain trail seekers. The professionalism by the mule packers and their intricate pannier packing, put a "hotel on hooves" for paths only accessible by horseback or foot. The mules were totally comfortable and knowledgeable with their duties, patiently allowing ties and knots to be practiced and cinched.



Joanie Henning, ICHO President

Continued on page 20



Santa is coming!

Think about 2013 AGM Commemorative items for the Curly lovers in your family.

They are available at:

<http://www.cafepress.com/ichoagm>



Kids and Curlies



Rowdy proves that names don't always tell the truth as he calmly gives Erica a ride in Wellington, CO.



Emma clearly enjoys her time with Annie at Henning Stables

Future Rodeo star, Tyler, braves the cold for a ride on Tuesday. At Promise Land Curlies in Alaska.



Annie gives her friend Brittany a horse hug.



HEY! Looking for pictures of youngsters and Curlies for future issues of the Gazettesend them—with a short description—to bitowy@yahoo.com



Brittany on Annie 11-10-13. Annie is an American Curly horse at Henning Stables.

Gait Gene Tested ICHO Curlies that qualify for the Gait Assoc. DMRT3 Gene Seal

BB Cinnamon	270-D heterozygous
DCC Justa Prince	1145-D homozygous
DCC Me 'N My Shadow	245-D homozygous
DCC Strawberry Ice	426-D homozygous
FC Justa Touch of Mist	980-D homozygous
Frostfire's Xequé	9-D heterozygous
Hero's Chocolate Kiss	255-D homozygous
JT'S Colt .45 Peacemaker	256-D homozygous
JT'S Courageous Comet	1658-D homozygous
JT'S Lobodacious	1358-D homozygous
JT'S Smoky Spirit	Pending homozygous
MO Charm	1441-D homozygous
MO Qui	1439-D homozygous
Moonlight Sonata	470-D homozygous
Oh Boy	254-D homozygous
One Curly Drifter	1262-D homozygous
Pizzaz Ringo	1656-D homozygous
RCR Backfire	984-D homozygous
RCR Kaziah	1046-D homozygous
RCR Lady Pansie	1079-D homozygous
RTE Topazs Lunar Eclipse	1296-D heterozygous
Topazs Merry Dream Dancer	1295-D heterozygous
UBMB Angel Leggs	1263-D heterozygous
Walker's Queen B	471-D homozygous
WDR Dragonsmoke	1587-D homozygous
WDR Skydancer	1586-D homozygous
WWW Blue Eyed Jake	1513-D homozygous
Xarina	1020-D homozygous
ZGC Cinnamon Ice	725-D homozygous
ZGC Dallas	878-D homozygous
ZGC Diego	997-D homozygous
ZGC Durango	998-D homozygous
ZGC First Lady	881-D homozygous
ZGC Sienna	879-D homozygous

If your ICHO Curly was gait gene tested and has the DMRT3 gene and not on this list, Please contact the office

Gait Gene Seal qualified- homozygous



Gait Gene Seal Qualified Oh Boy 254-D homozygous



Application form to amend your ICHO Registration paperwork is on page 21.



Cheryl and Mitch opened not only their town but their home to us. It was determined that Cheryl missed her calling as a party planner. She planned not only meals designed to reflect international cuisine but also the ambiance to enhance the experience. If anyone walked away hungry, it was certainly not Cheryl's fault. Thursday night opened with French feasting.



For a few brave souls the day began well before sun-up with a travelers lunch in a hobo bag and a trip on the historic Silverton train.

Membership renewal time—Mark your calendar — (and make it the new 2014 ICHO Calendar) or just send it in now.

It is that time of the year again when membership dues come calling. For new members, joining now gets you the rest of 2013 and all of 2014. For renewals, it is one less thing to remember come holiday and tax season.

Membership form and payment button are on our homepage- ichocurlyhorses.org



ICHO OFFICE
HC 31 Box 102A
Williamsburg, NM 87942
USA
office@curlyhorses.org

Date Rec'd	by:
Payment:	
ID:	
Seal Applied date:	

APPLICATION for GAIT GENE SEAL- Gaited Association Seal

Applicants must be Gait Gene tested for DMRT3

You may use the Amend/Change Certificate form found on our webpage: <http://ichocurlyhorses.org> under forms, or you may send in this form

HORSE NAME:

ICHO/NACHR #

GAIT Gene DMRT3 *circle one* HOMOZYGOUS HETEROZYGOUS

Pavment \$10.00 *circle one* CHECK PAYPAL

Your NAME:

Your Address:

Your email:

Your Signature: _____

Yes_____ I am including the NACHR regsitration Certificate for seal application



red licorice for the prima cord. Hard rock candy for a sweet and beautiful scenery.

Miners took their lunches with them in pails, had tin cups to drink out of and often ate Pasties—usually meat and potatoes baked in a bread or pie crust folded in half to make them easy to eat without silverware. Our lunch was supplemented with a highly detailed Bundt cake where all the parts were edible except for the tin decorations. We had sticks of dynamite made out of cookies, sparklers and

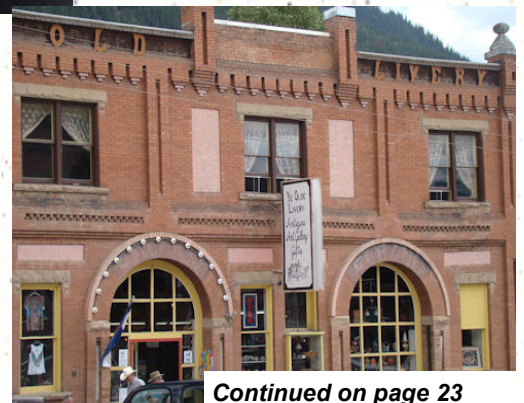


Table clothes for the wooden picnic tables and era specific miners lanterns added to atmosphere of our delicious picnic luncheon.

Many of the original buildings in Silverton still stand even



though they have been re-purposed. Not surprising there were many buildings noted as former stables but this building still proudly displayed the "Old Livery" designation in its brickwork.



AGM Continued from page 22

After visiting and lunching the ladies took advantage of the unique shops while the gents took advantage of the sun and a convenient bench.

For the "Hunts Woman" a treasure trove of fine Hunt hats were found and



after getting the Hubbies approval the very elegant black hat went home to Minnesota.



An authentic Austrian breakfast of unique cheeses, pastries and fruits helped jump start the group for the conference call Saturday morning.



Let's go there!



WE DID IT!

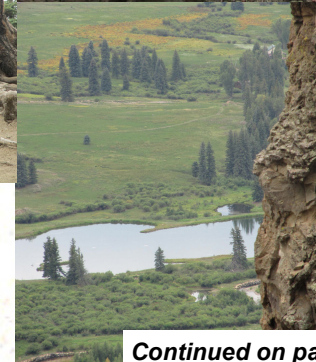
YUP! There they are!



For the afternoon, a trip to East Fork Campground in the San Juan Mountains, Treasure Falls and WolfCreek Pass afforded spectac-



ular views and a challenging hike for the brave



Continued on page 24



Mexico for lunch and great appetites in the outdoors.



Dinner Saturday evening was all about the American West and the history of the men and women who helped settle it.

Mitch cooked over an open fire serving up Steaks and baked potatoes and in general "traditional" all

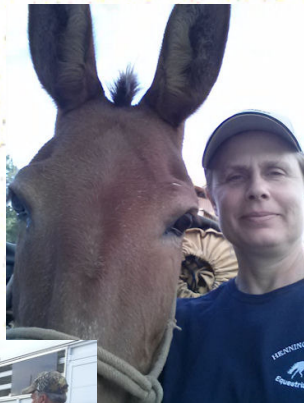


American fare. Cheryl again out did herself with the rubber ponies and beautiful tables.





The all important Pack saddle comes in several varieties. This outfitter opts to use a "sawbuck" saddle. This type of saddle is more limited in its use as it requires the use of a Pannier which Mitch and Jim are packing. A pannier can be either soft or hard and has loops which hook over the top "x's" on the sawbuck. This type of pack also requires the load to be well



balanced so as not to cause the load to tilt to one side or the other as the animal moves.



There are two categories of hitches. One category hangs the gear on the saddle, and includes the popular basket and barrel hitch. The other category wraps the entire load to the horse's body. These include the single diamond, one man diamond, double diamond, squaw hitch, ring hitch, and others.



The style demonstrated here is the Diamond hitch which wraps the load to the animals body.

Once loaded and hitched packed animals are tethered one to the other forming a pack string.

And it is off for adventures in country where no motorized vehicle dare tread.

