



# Winter 2014 GAZETTE

## International Curly Horse Organization

HC31 Box 102A, Williamsburg, NM 87942

office@curlyhorses.org

www.ichocurlyhorses.org

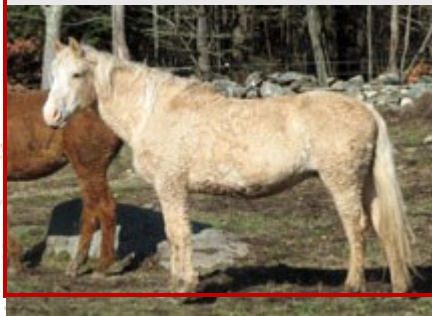
**ICHO—"To preserve, protect, promote, register and research the Curly Horse and its unique characteristics"**

### Dream on Curls Riding Center Big Hearts make big dreams come true

By Betsy Lirakis

A magical day it was when I purchased my first Curly horses - a stallion, two mares and a yearling filly. One of those mares was Dakota Surprise - bred by a wonderful fellow named Bill Valentine. So many great events evolved out of my beginnings as a Curly horse breeder - and one of those was the start up of our Therapeutic Riding Center using my enchanted Curlies! Dakota Surprise's first foal was a lovely palomino filly - I named her Dream Curl. As we (my daughter and I) tossed around ideas for naming this new venture of offering therapeutic riding sessions. I thought what better than to honor the first filly, now matriarch of the farm - Dream and combine it with the idea that dreams do come true with a curly horse. Thus - Dream On Curls Riding Center.

BG Dream Curl P-767- ICHO 150-D



Curly horses seem to lend themselves well to this job of carrying riders with special needs. At this center - we serve a wide range of riders - in age and disability: physical, emotional, social and cognitive.

I am fortunate in that my horses are fourth and fifth generation home bred equines - and since the inception of the Riding Center - I am adding those certain qualifications into my breeding program as well, as I have begun to specifically breed and raise horses and ponies for the program.

Much of the success of our therapeutic program rests on the fact that the Curly horse is pretty well suited for the job! Most Curlies are genetically well conformed for carrying a rider with a handicap. We call many of these horses our 'couch' Curlies. Comfy and safe, like a good wide cushy couch -- they offer the feeling of balance and security for their cargo. Their inherent patience and kindness

Continued on page 6



### HorseBuds Therapeutic Riding Center: Greeley's only PATH International Center Member.

By Deb Michael

#### History

HorseBuds Therapeutic Riding Center founder, Deb Michael, has lived in the Greeley community since 1990 and has been involved with Greeley and Eaton's community of families with children of special needs for ten years and was active with a local home school group for six years, but her personal passion has been training and riding horses. From these experiences an idea emerged to combine the two passions: horsemanship and volunteering time with families— especially those children and adults with disabilities.

Deb Michael and Curly mustang Gypsy—Envision Colorado, a program for adults with disabilities in Weld County faithfully helps out at the Center twice a week. Often they take part in training the animals and even dressing them up for fun. This is their handiwork.



abilities. Deb's subsequent pursuit of therapeutic riding was a response to the growing need and demand for this activity in the Greeley area, and in 2012 Debra became a PATH International Registered Instructor, and a PATH Intl. Equine Specialist in Men-

Continued on page 8





## GAZETTE SCHEDULE

- WINTER February**
- SPRING May**
- SUMMER August**
- FALL November**

Submit Ads & Payment to: [office@curlyhorses.org](mailto:office@curlyhorses.org)

### Ad & Payment Deadlines:

Winter Dec 15 Spring Mar 15 Summer Jun 15 Fall Sep 15

## INDEX

2013 Awards Winners .....	18
Curly Corner .....	4
Dream on Curls Riding Center .....	1
Eagles Ride Equine Center .....	12
HorseBuds Therapeutic Riding Center .....	1
Horses and Therapy Explored .....	10
ICHO 2013 Breeders Directory .....	20
ICHO 2013 Profit and Loss .....	5
Kids and Curlies .....	9
Presidents letter .....	3
<i>Next issue—Russian Curlies, Hypoallergenic Curly Stories and more!</i>	
<i>Have a favorite Curly story and or picture? Send them in—we would love to feature you and yours.</i>	

### ICHO now offers DNA testing for:

- Ancestral only TX A&M .....**\$25.00
  - Parentage Only U of KY .....**\$30.00
  - Gait Gene DMRT3 TAMU .....**\$30.00
  - Lp color TX A&M .....**\$35.00
  - CA- (Cerebellar Abiotrophy)VetGen..**\$35.00
- Visit the website for more info or contact the office.**



To obtain a mailed copy of the Gazette, there is now a \$10.00 yearly fee. You can always view the Gazette online for free on our webpage— <http://ichocurlyhorses.org> in the Members Only section and print a copy for yourself.

## Gazette Ad Specials!

Stallion Station Ad— only \$10.00 per issue, \$40.00 for the year, color ad.

Business Card Ad— only \$10.00 per issue, \$40.00 for the year, color ad

All color Ads at Black and White Prices! All Gaz Color Ad fees reduced!!

Full Page Color \$40.00, 1/2 Pg Color \$20.00, 1/4 Pg Color \$10.00, Classified \$10.00

Submitting ads: \*Pay for ads online on our webpage— <http://ichocurlyhorses.org>

All ads must be copy ready in word doc format or jpg, png. Since we have reduced our prices we need the ads in ready to print format. For photos png is preferred since it has the best resolution. We can no longer accept pdf format because it does not insert clearly for the Gazette editing process.

All Ads must be sent to the office with payment. Ads also appear on the ICHO webpage.

Thanks! [office@curlyhorses.org](mailto:office@curlyhorses.org)

Gazette editor— Joan Henning

### Gazette Ad guidelines:

- .doc format
- .png or .jpg pictures
- payment at time of placing ad
- Winter deadline—Dec 15
- Spring deadline—Mar 15
- Summer deadline—June 15
- Fall deadline—Sept 15
- All ads and payment sent to the office.

Ads received after the deadline will run in the next issue.

### Gazette Content:

**Awaken the writer within you!** We are always looking for interesting articles for the Gazette. The article could be about training, health tips, an interesting story about a Curly or anything of interest horse related. Please send all articles to the office before the deadlines.

## ICHO BOARD

**President - Joan Henning**  
Region 5  
JHenning\_joanie@yahoo.com

**Vice-President - Trish Rosborough**  
Region 7  
trish@yanagistables.com

**Treasurer - Donna Hedicke**  
Region 4  
dhedicke@earthlink.com

**Registrar - Jackie Richardson**  
Region 3  
registrar@curlyhorses.org

**Web Manager - Sheryl D'Uva**  
Region 1 At Large  
cozynookcurlys@gmail.com

**Marge Murdoch**  
Region 2 At large  
Edward.murdock@hughes.net

**Terry Schmidt**  
Region 6 At large  
teschmidt@comcast.com

**Sandra Hendrickson**  
Region 5 At Large  
greycoat@comcast.net

**Janice Voss-Crosby**  
Region 3 At Large  
crosbyvoss@yahoo.com

**Marianne Bornemark**  
Region 8 At Large  
mbornemark@gmail.com

Reg 8—international - Australia, Austria, Belgium, Denmark, Finland, France, Germany, Norway, South Africa, Spain, Sweden, Switzerland, United Kingdom, Russia



Greetings ICHO members and friends!








We are looking forward to another productive and Curly year! You know what it is like to think about the future, you have to reflect on the past.

Last year was a standout when the gaiting gene was isolated. If you would still like to have your horse(s) DNA'ed for the gait gene, go to <http://www.ichocurlyhorses.org/> for the proper forms.

Many programs are in place to serve ICHO members, see the award winners in this issue. Thank you and congratulations to all who participated, you are all winners! I would also like to thank you for all the wonderful Curlies registered this year and for your support to ICHO. If we can help you in any way, please contact us.

We would also like YOUR help, we have several committees that depend on ideas and hours to be carried out by volunteers (which we all are) for productive results. If you would like to be a part of a committee, please contact us.

### Committees include:

-  **Genesis**—To establish and maintain standard protocol for breed development in Associations of ICHO through inspection protocol and using the (F) filial generational tracking
-  **Show committee**—Work toward development of Curly horse shows and yearly show awards
-  **Awards Committee**—Develops yearly awards and distributes them. Works with Show Committee on show awards
-  **Convention Committee** - organizing and hosting AGM
-  **International Committee**
-  **Promotions and Fundraising Committee**—Promote Curly horses and awareness of Curly horses, promote ICHO membership, fundraising for donations for various areas such as research, promotions funds, etc.
-  **Research Committee**— Research and funding for research to better understand the Curly horse, the genetics of the Curly horse, provide support and education to breeders and members with all that is involved in breeding and management, delve into the Curly horse history

Have you found your niche yet?!

Give us a shout, we would love you on board!

Our vision for 2014 is to see our committees busy, Curly horses abounding and members showcasing their wonderful horses.

Check out NACHIP inspections, how about hosting an inspection? Do you need details, contact us!

***We are ICHO, the same registry you have come to know and respect after all these years!***

Sincerely,  
Joanie Henning and Angel Leggs  
ICHO President, Member #358





# The Curly Corner



Betsy Lirakis pulls out all the stops in decorating herself and her girl Keri Orla for the holidays.



Showing his Christmas Spirit is RenegaitChesterfield (Chester) ICHO#1203-D. Angie Gaines joins her 2007 Curly Stallion in the spirit of the season with her Santa hat.

As no pageant would be complete without a unicorn Zoe helped out with Sweet Dream's Baby (barn name Mari ).



Perhaps Teasel Obi and Zoe Lirakis think they can hide and peek and spy Santa when he comes in his sleigh.



Black Rock's Golden Firefly, O'Sparky ICHO#1553-D, born Jan 1, 2009, Bay, BLM Curly Mustang Stallion. Like the gentleman he is O'Sparky let's his mom decorate him to match her.



## INTERNATIONAL CURLY HORSE ORGANIZATION

### 2013 FINANCIAL PROFIT & LOSS REPORT

<u>INCOME</u>		<u>EXPENSES</u>	
Convention Income	\$2266.60	Association Seals	\$720.20
Promotion-Calendar Fundraising Income	\$427.21	Convention Expenses	\$2261.60
Show/Awards Income	\$35.00	Promotion Expenses	\$752.89
Research Income	\$198.00	Show/Awards Expenses	\$369.08
NACHR Dept Income	\$5198.00	Contract Services	\$3000.00
Donations	\$2.00	Research Expenses	\$196.92
Gazette Ads Income	\$130.00	NACHR Expenses	\$1542.03
Membership dues	\$2975.00	Equipment Repair	\$150.00
Shipping Fees	\$23.95	PayPal Fees	\$363.29
Website Ad Income	\$75.00	Operating Expenses	\$887.11
		Website Expenses	\$174.03
<b>TOTAL INCOME</b>	<b>\$11330.76</b>	<b>TOTAL EXPENSES</b>	<b>\$10417.15</b>
<b>NET INCOME</b>	<b>\$913.61</b>		
<b>Research Fund: \$4774.00, CMA fund: \$395.50</b>			
<b>Assets: PayPal \$2,065.64; Compass Bank \$14,964.82; Citizens Bank \$22,517.25;</b>			
<b>Total Assets: \$39,547.71</b>			



**ICHO Webpage has had a facelift and new look! Check it out-[ichocurlyhorses.org](http://ichocurlyhorses.org)**

**Memberships are Due for 2014 go to the home page for the payment link and the member form.**

**A HUGE thank you goes out to all of our 2013 members/ supporters, GO Curlies & their fabulous owners/breeders !!! **Thanks for being a part of ICHO****





makes them the perfect choice for therapeutic mount. And so many of our clients with disabilities have allergies - it seems to go hand in hand in many cases. So the fact that the horses are non-allergenic is a huge plus! We do have to be very careful with our insect repellents however - and rely on all natural

products, since some of the riders have a reaction to the commercial repellents.

Having the job as therapeutic mount is not always easy nor rewarding for the horse - as some of the riders are challenging. We have discovered that there are some horses who cannot - for example - serve in a lesson with certain autistic clients. Some participants somewhat enjoy their therapeutic sessions but give very little back to their mount in the way of affection and/or emotional connection - just the nature of their disability. There are times when we find certain horses are confused by the lack of feedback from their rider/groomer. Other horses have perhaps a more sacrificial nature and serve quietly and patiently regardless.

Horses and riders are carefully matched using many criteria. Size and height of rider, disability needs, goals set by the rider and the rider's clinician are just a few of the things taken into account when selecting a mount. There are subtleties and differences in the gait of the horses that make a difference in the benefits of the ride as well. So depending on the physical handicap and needs of a potential rider - they are matched up with a horse that can offer, for example, more 'swing' in the walk. Size and width of barrel is another consideration - and many riders work their way up to more of a stretch starting out with a narrower barreled horse. There are some program participants who start with strictly 'on the ground' sessions to address their specific needs and goals.

There is definitely more to a therapeutic equine ses-

sion than merely a lead line lesson. I have witnessed so much growth in so many areas with our riders. It is very gratifying to be a part of the process. We have riders who have been coming since the beginning of the program - they sometimes stay with the same horse- sometimes graduate to another. Some of the riders master increased skills which of course flows over into their everyday life -- as they realize they are capable and brave. Through their relationship with their horse - they learn enhanced social skills; boost their ability to make decisions for themselves; their quality of life is improved.

There are some riders that stand out particularly in my mind - and these create the events that make all my behind the scenes work so worth it! I am so respectful and amazed in so many cases of the dedication of the caregivers who bring the riders, and also of the bravery and commitment of so many of the riders despite the challenges of their disability.



One of our riders was an elderly gentleman in his mid to late 60's who was non-verbal and also deaf. He would be riding for the first time in his life - with the goal of building core strength and balance. As with all of our lesson riders - so much more was gained in his time with us. My daughter/ instructor, Zoe, worked out

visual cues for this rider so they could communicate. Each week - no matter the weather - this rider came all smiles and hugs for us and his horse. He was able to work up to independently grooming and tacking up



his mount. At first, he was very slumped in the saddle and un-

balanced- requiring side walkers to help support him in the saddle. Time in the saddle was short at first -- but after 8 months of hard work in the saddle, this gentleman was able to trot around the arena maintaining his balance - with no side walker - and no leader! The smile



**Curly Standard Place - ICHO member #109**  
**owned and operated by: Shelly White BC Canada**  
**250 494-4092 [curlystandardplace@gmail.com](mailto:curlystandardplace@gmail.com)**

**[www.curlystandardplace.com](http://www.curlystandardplace.com)**

**Proudly standing stud:**

**\*Sandman's Magic - ICHO 251-D**

Homozygous, 15hh, sooty dun,  
 Curly Sporthorse Stallion  
 Live cover and shipped semen  
 Frozen semen available- Europe & Australia!  
 Offspring offered for sale

**\*BCF Icon - ICHO 1436-D**

16hh Black and white Tobiano  
 Curly Sporthorse Stallion  
 Live cover and shipped semen  
 Offspring offered for sale



*Curly Standard Place has been breeding, training, showing and offering for sale quality Curly horses for over a decade. Our main focus has been Sport-type horses that are capable of doing all riding/driving disciplines. We have Curly horses of all ages and stages of training offered for sale at all times. For a complete list and more information please visit us in person (visitors always welcome!) and also our home online at our website: [www.curlystandardplace.com](http://www.curlystandardplace.com).*

\*Sun Light Serenade 2012  
 copper dun Curly filly- \$2500.00

\*CNC Joeseeph King of Dreams  
 1998 Curly gelding \$3500.00

\*Izzabella 2012  
 Tobiano Curly filly-\$5000.00





tal Health and Learning. In addition, she obtained a certification in the Horse Boy Method™, a method that specializes in helping families with children or adults with autism and neurodevelopmental disorders. After a nine month pilot program to set up the facility and test run classes, HorseBuds Therapeutic Riding Center was opened and registered as a Colorado State non-profit charity in June of 2013. The center has recently filed an application for a 501(c)3 status. Many hands and many hearts have helped to make this center a reality. Over 1400 volunteer hours of time were recorded on the farm in 2013 alone.

### Unique Environment

Coyote Run farm is now alive with activity, smiling faces, beautiful families, volunteers and animals that touch hearts and make up the HorseBuds family! At HorseBuds TRC our goal is to increase the independence of children and adults with disabilities by offering a safe, family friendly farm environment for therapeutic riding and activities. What makes HorseBuds TRC unique is the environment. Located on Coyote Run Farm in Greeley, Colorado, and overlooking the beautiful Rocky Mountains, the center has the use of 80 acres with a large pond, trails, 100' x 200' arena, round pen, barn, an office heated with a fireplace, 60 acres of pastures, and a home-style



**Rule-based games are an important part of therapeutic riding!**

A stress-free natural environment can only be achieved if safety for all participants and volunteers is a top priority. So, even though we are not your typical therapeutic riding center we have specialty standards and requirements for our facility, program and administration. HorseBuds TRC is an accredited PATH International Center Member. The Professional Association of Therapeutic Horsemanship (PATH) International mission is to change and enrich lives by promoting excellence in equine-assisted activities and therapies. PATH Intl. was established in 1969 to produce guidelines and standards in the various fields, disciplines and professions associated with equine-assisted activities and therapies. The cornerstone of the organization was to place emphasis on center accreditation and instructor certification to ensure that participants receive the best possible instruction at centers that uphold the highest quality standards.

**Three PATH International programs are offered at the center:**

### Therapeutic Riding

Therapeutic riding and horsemanship are for children and adults with physical, and cognitive disabilities. Behavioral and psychological disabilities are also addressed. Participant's ages as recommended by PATH International are six and up. A physician's release is required and after an evaluation takes place, if there are no contraindications the participant will be accepted into the program. The benefits of therapeutic riding are many, such as, increasing the rider's motility, core strength and balance.

Continued on page 11



**Curly, an eight-year-old extreme Curly horse, is a clown and loved by all!**

shaded backyard with hammocks, swings, a tree house, fire pit, monkey rope, chickens, pigs, goats, dogs and cats for all to enjoy. Most people are surprised to see seven Curly horses, all trained to do tricks that motivate participants to use verbal communication.

### Accredited PATH International Center Member



# Kids and Curlies



Tyler and her Curly friend Kona give a lift to Paris. Tyler has been training this filly herself.



Cinnamon Twist EB poses with her pretty holiday decorations and santas helpers Shane and Danielle.



Zoe Lirakis' son, Dominic waits with OYY Miss Kitty ( red flannel nightgown) and OYY Salvadore's Legend ( dressed as an elf) for their turn at the pageant.



Betsy Lirakis' grandson, Dominic, gets into the Christmas spirit and takes OYY Arcus with him.



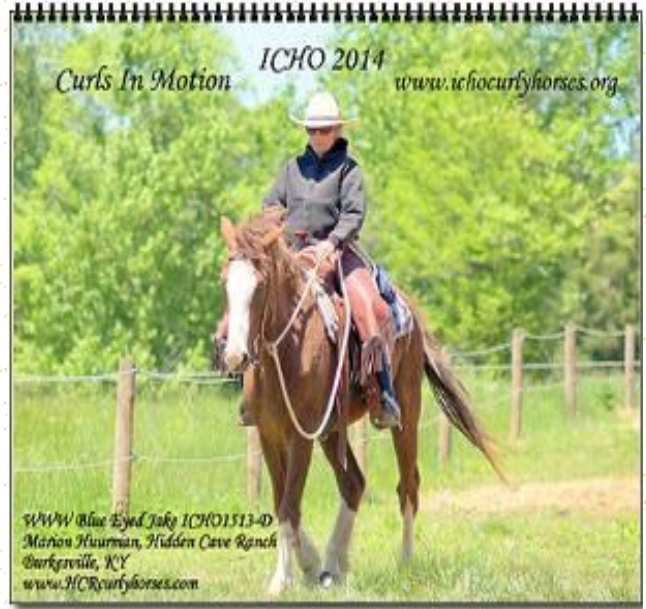
Bella brings joy to a young friend and fan. Laurie Lee is fostering this sweet Curly girl for the CHR. However, she says Bella has a forever home with as Bella's age and health issues make it unlikely anyone will wish to adopt her.



**2014 ICHO Curlies in Motion Calendar Available now at:**

<http://cafepress.com/icho>

Congratulations to our Cover Contest winner Marion Huurman and WWW Blue Eyed Jake 1513-D



Be sure to check out the individual months page items. With Christmas just around the corner, these make great gifts

Dream on Curles from page 6

on his face was priceless! He passed away in his sleep one day - and we feel so special to have been able to offer this opportunity and experience for him in his last days. His family held his memorial here and of course his Curly horse played a prominent role in that memorial!



There are some young children who arrive very anxious and shy. One young boy with multiple overlapping disabilities entered the program almost a ghost - very little eye contact, not much to say, in addition to very poor posture and no strength to speak of. He needed a lot of assistance in mounting for physical reasons and also nervousness/anxieties. There was a spark of really wanting to be in that saddle though -- and by the third or fourth ride - he mounted and reached down to pet his horse with the words ~ I Love You! His improvements were astounding to say the least ! He also needed a side walker to help balance in the saddle - and a leader to help direct the horse. By the end of his sessions, he

sat straight and proud -- was able to self correct his seat if he began to slide one way or the other - with just a word from Zoe - and he navigated through a "trail " course with a bridge and alleyways by himself. I am sad to say - due to budget cuts -- he is no longer able to ride with us.

There are so many anecdotes such as these - young and old, people



Continued on page 12

**Horses and Therapy Explored**

by C. Ellen Southwell

**Hippotherapy**

Unlike therapeutic horseback riding which teaches specific riding skills, Hippotherapy uses the characteristic movements of the horse to provide motor and sensory input to aid with physical, occupational and speech therapy.

Continued on page 14





## Y.S. Kinyobi

ICHO 1066-D, ABC & CSI Registered  
15hh Sport Stallion

Mahogany bay with chrome.

Producer of Flashy, Athletic offspring suitable for Sport Performance.

[www.yanaqistables.com](http://www.yanaqistables.com)

Mulmur, ON, Canada, 519-925-2545

HorseBuds Continued from page 8 Confidence is nurtured while riding ability improves. Special bonds are created, not only with the animals, but other participants and volunteers in the HorseBuds family.

### A Program for At-Risk children

Wild About Horses is an Equine Facilitated Learning

program for At-Risk children ages 11-17. Riders will learn about communication, taking risks, and conquering their fears through knowledge and preparation. They will learn horsemanship from the ground to the saddle, and also, how to groom and tack up their horses. Responsibility, teamwork, and how to establish trust and respect with animals and people are taught. Participants learn

about the emotional and physical needs of animals, and how this relates with personal relationships. Some of the diagnosed disabilities addressed are PTSD, ODD, ADD, ADHD, and Anxiety Disorders. This program is lead by a PATH International ESMHL (Equine Specialist in Mental Health and Learning). This certification enables a Colorado Licensed Psychotherapist or Mental Health Professional to work in these sessions. The ESMHL instructor is trained to



provide a safe environment for this type of therapy and to collaborate with the mental health professional by providing lesson plans and professionally addressing therapeutic moments of opportunity.

### A Pony for the Winter

This is a program for children or adults with disabilities who always dreamed of having a horse! This is not a riding program, but the participant may choose a horse from the herd of eleven to be their special horse, or they may work with all the horses. They will learn about caring for both the horse's emotional and physical needs. All aspects of horse handling, maintenance, and training, as well as the horse's behavior and health will be covered. This program is tailored to fit the participant's needs and capabilities. As always, working with horses is a challenge and of course safety is a priority, so the program is taught by a PATH International Registered Instructor. Participants will be taught to handle horses using Natural Horsemanship methods as used by the late great Tom Dorrance and Ray Hunt, as well as current trainers such as Buck Brannaman, and our own Julie Lorton, Vice-President of the HorseBuds TRC board and a sanctioned clinician with the Western Dressage Association of Colorado.

### Hippotherapy

In the future, HorseBuds TRC hopes to be able to offer Hippotherapy for people with disabilities who normally work with an OT or PT or Speech Therapist in an office, but would like to experience therapy on horseback. Lessons are performed by Colorado licensed physical, occupational, or speech therapists with a certification in Hippotherapy.

Continued on page 13



who come with no self esteem learning to stand proudly, potential riders who arrive unable to even stand straight or sit up in a wheel chair without straps to hold them in -- after a time, sitting in the saddle upright on their own, at risk teens and substance abusers who learn to turn their life around after the experience of being part of the team - horse and rider!



I am always so proud of my riders -- and so proud of my special and magical Curly horses who carry and teach and make such a vast difference in these lives and mine!



### Eagle's Ride Equine Center Connecting to the Wisdom of the Horse

by Judi Joba, MA in Education, Graduate Instructor from Cheff Center for the Handicapped, EAGALA Certified

The relationship of horse and humans goes back millennia. At first they were hunted and eaten, then it was found that they could be of service to us as partners who could pull the plow, carry the family on their back or in a drawn vehicle and as an instrument of war. With this discovery the relationship completely changed and so with it came a new found companion and co-creator in history.

Without the horse, the expansion of mankind across this planet would have taken far longer. Horses were so prized by the Bedouins that they slept in the same tents with their humans and were never sold and only given away when so earned.

The first written reference of horses used in "therapy" goes back to Alexander the Great, author of the first book of horsemanship. In the text he describes his observations of the "uplifting of the spirits of his wounded soldiers" when they were put onto the back of a horse. It was Liz Hartel in the 1954 Olympics who truly brought therapeutic riding into the limelight. As a victim of polio, she found that her horses were her physical and emotional therapy and gave her the courage to continue on. She competed and was a bronze medal winner in dressage.

Today, horses are used in a number of therapeutic modalities. Therapeutic riding for riders with disabilities is probably the most well known with many centers across the North American continent. The movement of the horse mimics the movement of a human walking and is therefore helpful for riders who are limited in their physical capabilities.

One of the fastest growing therapeutic uses of horses is in equine assisted psychotherapy and equine assisted learning. The horse becomes a valuable partner in the therapy process along with the therapist and horse specialist. A number of organizations exist in the United States that have a certification process

A horse skull is used as a template in making horse masks. The horses oversaw the process and leant their energy to all.



for this work including EAGALA, PATH, OK Corral, BeMore to name just a few.

Eagle's Ride Equine Center in western South Dakota offers a variety of services including boarding, training, lessons, equine assisted psychotherapy, equine assisted learning

Continued on page 16



~~~~~  
WW Thunder Moon ICHO 429-D, ABC P2276 DOB 7-10-97 Stallion.  
Sire Curly Tom, Dam Pipestone Woman.  
Curly coated 1/4 draft, has sired approx 20 foals.  
Trained to drive, comes with biothane harness, black with red trim, collar and pad.  
Thunder has moonblindness and has lost sight in one eye to cataracts, he needs supplements daily to keep flare ups at bay (MSM, devils claw). He gets around fine but no longer is driven but will lead fine while hitched. We are no longer breeding, but he can be used as a breeding stallion.  
Price negotiable, good home a must.  
Contact- Dale Reveglia dsldinfo@gmail.com  
~~~~~



These sessions are in collaboration with a PATH International Registered instructor.



**HorseBuddies Family Play Dates: Not typical therapeutic riding lessons.**

### HorseBuddies—Family Play Dates

Play dates are not a PATH International program. These Play Dates utilize volunteers, and an Instructor certified in the Horse Boy Method™.

These family play dates are specific to families of children/adults on the Autism spectrum and those with

Neurodevelopmental disorders that affect emotion, learning ability and memory. Fetal alcohol spectrum disorder, motor disorders including Tourette syndrome, Traumatic Brain injury (including Cerebral Palsy), communication, speech and language disorders, Fragile-X syndrome, Down syndrome, and ADHD are Neurodevelopmental disorders. These disorders may have significant mental, emotional, and physical consequences for individuals, and in turn their families. Therefore, the program is inclusive of the whole family. By serving all members of the family, and combining families together, new friendships are fostered, bonds are created with one another, support groups are formed from those sharing a common interest in a safe accepting environment. There are a wide variety of activities for the entire family to enjoy in a non-traditional therapeutic setting.



Because it is important to start early with children having difficulty with sensory issues and verbal expression, the age to start a child in the Horse-Buddies program is determined by the child's program evaluation.



For the child with special needs this experience is primarily about COMMUNICATION, opening up to the world around them in a

Continued on page 15



Hippotherapy has been used to treat patients with neurological or other disabilities, such as autism, cerebral palsy, arthritis, multiple sclerosis, head injury, stroke, spinal cord injury, behavioral disorders and psychiatric disorders.

### Equine-Facilitated Psychotherapy (EFP) and Equine-Facilitated Learning (EFL)

Based on the theory that as a domesticated prey animal horses are exceptionally sensitive to changes in predatory animals as represented by humans EFP and EFL use horses as tools to facilitated greater awareness within the human (patient) of their own internal physical reactions (physiological functions) and works in conjugation with traditional psychotherapy treatments.

### History

Ancient Greeks understood that for a person with handicaps riding was not only a form of transportation but also improved their mental health. As early as 600 B.C., Orbasis of ancient Lydia documented these therapeutic values.

Cassaign, a French doctor, is credited with conducting the first study of the benefits of horse-back riding as a therapy in 1875. He concluded the physical benefits included improved balance and joint movement for some types of neurological disorders. He further observed there were also psychological improvements.

Therapy became more mainstream starting at the turn of the century when it was used in Britain as therapy for wounded soldiers during World War I



Jeannie suffered a spinal injury that left her a quadriplegic many years ago. No matter her physical challenges she talked of nothing but getting to see the horses and the smile on her face as the Bit-O-Wy curly babies voluntarily came to see, sniff and say hello made braving the cold and wind seem like nothing.

and progressing to the 1950's when it was used to treat all types of handicaps. Equine riding therapy was introduced in Scandinavia following two polio outbreaks in 1946 and was introduced in the United States and Canada in 1960.

**"There's something, about the outside of a horse that is good for the inside of a man", Winston Churchill**

Fast forward to today and Hippotherapy is a recognized medical field and the use of horses for the treatment of mental illnesses has become a growing field.

### Why it works

Churchill said it best when he said, "There's something, about the outside of a horse that is good for the inside of a man", making it logical that horses be utilized when treating mental and physical challenges within humans.

Although there is some skepticism as to the veracity of horses providing benefits other than physical therapy, therapists, patients and family members of the afflicted believe there is benefit based on the results achieved.

Rupert Isaacson, father of an Autistic child and founder of the Horse Boy Foundation witnessed the healing benefits of one specific horse, Betsy, when his son spontaneously ran up to Betsy. As a horse trainer, Isaacson, witnessed for the first time ever a horse voluntarily lowering its head to a human in a submissive pose. As a father, he experienced his son, who had been non-verbal to this point, speaking to him for the first time when he placed his son on Betsy's back.

**It has been clinically documented that just being around horses changes human brainwave patterns.**

One mental health therapist expressed the belief that when someone has mental issues it is often hard for them to sit in a traditional therapy session and open up. Being with the horses in a natural setting helps the human to realize what is going on inside themselves making it easier for them to find their own solution. This leads to an overall positive experience and alleviates the nerves & tension which are often present during traditional psychotherapy treatments.

One theory is that interacting with





safe environment, and learning how to transition between activities and learn to better communicate with friends and animals of all sizes. Horses can carry a person into a unique sensory environment where information can be received and the child's intellect can be engaged. In this program

each child is assigned a "buddy" and the parents may participate or just relax and enjoy some quiet time.

Through the suc-



cess of the Horse Boy Method™ developed by Rupert Isaacson, his son Rowan and a horse called Betsy, this new approach to therapeutic riding has changed lives for children and adults with Autism and Neurodevelopmental disorders and their families.

Wonderful volunteers, reliable well-trained horses and a

unique PATH International Member Center create a relaxed and safe atmosphere



where rider's can thrive as horsemen. The families become part of the HorseBuds family and come to the farm to relax, explore, and have fun. Par-

**HorseBuddies Family Play Dates** are not just for children. It's a chance for the whole family to experience something out of the ordinary.



ents, siblings and children with special needs enjoy various activities including horsemanship, fun with the mini horse and donkey, various sensory activities and rule-based games. Friendships are developed and lives are changed!



To be honest, my son has never responded to someone as quickly as he has apparently done with you and your volunteers. I have watched him blossom in this program. Thank you for the opportunity for him to participate.

**Mandy M.— May, 2013**

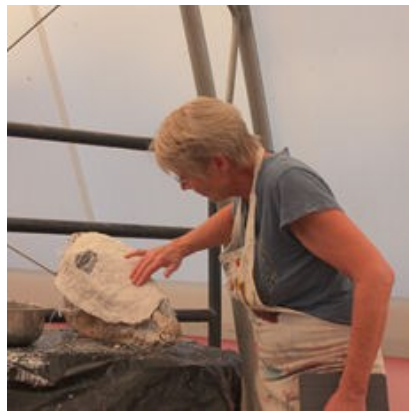


and horse wisdom workshops. The horses at Eagle's Ride serve as lesson horses, show horses and therapy horses. I am always amazed how they can step into their different roles and fulfill the needs of the riders and participants.

Because the horse is a prey animal they can sense the emotions and the energy of the people they are working with. As a result of this sensitivity, they 'mirror' what is going on with the client and therefore offer the person a chance to better see and understand themselves. Professional therapists have commented that they can get more done in one hour with the client in an equine assisted session than in ten hours of traditional 'talk' therapy.



Because this was such a sensory experience we did a blindfold exercise. One person held the horse while the blindfolded person used their senses without sight to get to know the horse. The horses were bothered by nose flies and irritable when we brought them in but as soon as we started the exercise they all settled down, relaxed and became very quiet. It was a powerful exercise and very well received by the participants.



There are literally hundreds of stories to share of breakthroughs in an

Surgical gauze, paper mache are the materials we used to create the actual mask. After the masks were dry, the participants had numerous materials with which to paint and decorate the masks.

EAP (equine assisted psychotherapy) session. One in particular that happened at Eagles Ride involved a group of women who were in treatment for substance abuse. The activity they were involved in was a simple grooming exercise where they had chosen a horse to work with, brought it to the barn and were grooming the horse. One of the clients was a tall, large framed person



who had a 'tough' exterior. She was grooming one of the mares and began to cry. She said it "was the first time in my life I have ever felt accepted." It was a simple but profound moment.

Another story involved a woman who wanted to work through some issues regarding her mother and the family who wanted to put the mother into a nursing home. She asked if she could take one of the mares into the round pen. It had snowed the day before and she sat down on the ground, made some snow angels and when she sat up the mare was standing over her. She began to cry and the mare literally licked the tears off her face. When she came out, she said she knew what she needed to do regarding the family situation.

Eagle's Ride also offers Horse Wisdom Workshops. In their Connecting to the Wisdom of the Horse Part I participants are given the opportunity to do reflective work with the horse in the round pen. The responses of the horses vary depending on what is going on with the person. Participants come away more grounded with the tools to go inward to find their own wisdom.

Horse owners will often share their own stories of how their horses are 'their best friends', a place to go to when they are troubled and to help them heal. It does not matter the breed, the size of the horse or the personality. We use Arabians, Quarter Horses, Trakheners, POA's in our program with equal success.



This is a mask I made in honor of a great horse, Stone Oaks Phantom, I was partners with.

While we do not have any Curlies in our program, a breed of horses that is hypoallergenic is a terrific tool as it will allow folks with equine allergies to explore the benefits of equine assisted therapy.

For further information you can go to [www.eaglesride.com](http://www.eaglesride.com) [www.horsewisdomworkshops.com](http://www.horsewisdomworkshops.com).





horses breaks through defenses that may be in place for someone sitting in a room. Therapists feel that not being able to force a horse to do anything is useful in that it forces negotiation and thus leads to changes in behavioral patterns. Overall, horses seem to speak a universal language.

"It has been clinically documented that just being around horses changes human brainwave patterns. We calm down and become more centered and focused when we are with horses," said therapy counselor Gabrielle Gardner, of Shine for Life.

"Horses are naturally empathetic. The members of the herd feel what is going on for the other members of the herd." For example a horse will move away from an angry person and follow someone they trust.

One of the axioms of training horses is the horse mirrors the human. To stay safe and to be successful

when interacting with horses humans learn to pay attention to the subtleties that are non-verbal communication.

For instance, someone who appears confident and may even feel confident within themselves finds their horse partner to be nervous or flighty. Initially some might mistake this as innate behavior to that or all horses. If they are persistent and honest they will come to realize the horse is acting as a biofeedback machine and reflecting the human's physiological responses.

**"Have I got it all wrong? Does Autism have to mean the end of everything? But was I looking at it the wrong way around? Could this not be the gateway to adventure?"**

One way to demonstrate the reflective nature of the horse's behavior is to have someone who is truly confident and at peace interact with the same horse while having that patient note the difference in the horse's response.

So, when someone complains "This horse is stubborn. That horse doesn't like me," etc. the lesson is that if they change themselves, the horse will respond differently. Additionally, horses are honest making them especially powerful messengers.

And while all animals seem to help people with disabilities, especially overstimulated neu-

Continued on page 18

# HENNING STABLES

[www.henningstables.webs.com](http://www.henningstables.webs.com)



**One Curly Drifter -**  
ICHO#659 3/4  
16hh, Gaited—DNA tested homozygous for gaiting

Exceptional personality, Very curly with huge double mane and tail that does not shed

**Live Cover Only—2014 breeding season**

**Contact us for more details**

**Blanchard, Michigan, 989-561-2935**





rological behaviors, to be calmer and to be able to verbalize in an understandable manner studies have been done that show horses appear to be especially effective as therapists. Scientific study has shown that any repetitive rocking motion where one has to repeatedly find their balance opens up the learning receptors of the brain. Specifically, horses appear to calm the nervous system hypersensitivity experienced by those with Autism.

### Horse Boy Method™

“Have I got it all wrong? Does Autism have to mean the end of everything? I mean when the diagnosis first came it was as if our entire world had shut down. But

was I looking at it the wrong way around? Could this not be the gateway to adventure?” Rupert Isaacson, Creator of the Horse Boy Method™.

Now practiced world wide by trained therapists, the Horse Boy Method™ consists of 6 levels. These levels start with environment and build through sensory, horseback riding, perspective, academic and finally into self-advocacy and are aimed at getting communication and brain re-patterning for people with Autism. However, it's effectiveness is not limited to autism and applies equally well to ADD, ADHD, dyslexia, anxiety, grief, and other conditions of the nervous system and the brain.

Continued on page 19

## 2013 ICHO Awards Winners

### Congratulations to our talented winners!!!!



Grand Champion Eventing- Liz Mattke #397 and DCC Traveler 142-D



Reserve Champion Adult Amateur Dressage- Shelly White #109 and Shesa Magic Charm



Grand Champion Adult Amateur Dressage- Anastasia Ivanusic #669 and CNC Joseph King of Dreams 1088-D



Champion Youth Rider Kendahl D'Uva Jr# 650 and RRR



Curlies in Action Award 1st Place- Silver Level in Events- 180 pts each horse and rider, Trail Riding 165 points, 131 miles, Training Category 255 points goes to Kendahl D'Uva and RRR Black Rose.



 **Andrea Schaap Adult Scholarship Winner- Liz Mattke**

 **Sunny Martin Youth Scholarship Winner- Kendahl D'Uva**



More information on this method can be found at <http://www.horseboyfoundation.org/>.

### EAGALA

Another therapy model is EAGALA. Unlike Horse Boy, EAGALA focuses on EFP and EFL therapy.

Horses at liberty are used as situational representations of what is going on in a human patient's life. This allows them to discover the current beliefs and reactions they have and then work on finding new reactions and beliefs to help them move past the issues. It also allows issues that may stay hidden for extended periods of time in traditional therapy sessions to surface and be addressed more quickly. EAGALA, gives a clear safety profile and easily understood structure. For example it has two therapists at all times. One is focused on the human and the other is focused on the horse.

More information on this method can be found at <http://www.eagala.org/US>.

**Professional Association of Therapeutic Horse-**



**Bit-O-Wy Mocha gets a treat from Jeannie**

### manship International (PATH Intl.)

Established in 1969 under its original name the North American Riding for the Handicapped Association, PATH Intl evolved into other equine assisted therapeutic programs. With this expansion of its focus the organization changed its name to better reflect all that it encompasses.

PATH Intl aims to promote safety while achieving optimal outcomes for equine-assisted activities and therapies (EAAT). These programs include carriage driving, vaulting, cognitive and

behavioral therapy through equine facilitated learning, ground work and stable management.

More information on this method can be found at <http://www.pathintl.org/about-path-intl/about-path-intl>.



## CALLING ALL MEMBERS

**Have a story about someone experiencing Curlies for the first time and finding they can enjoy horses again without the sneezing, sniffing and itching? We would love to feature your story(ies) in the Gazette. Please send them to me at [bitowy@yahoo.com](mailto:bitowy@yahoo.com)**



# ICHO Breeders 2013/ 2014

## ALASKA

ICHO# 211 Annual 2013 Breeder Region 1  
Kristie Parsons  
PO Box 13198  
Trapper Creek, AK 99683  
907-982-3330  
arctic\_kristie@yahoo.com  
*Buyer and Seller referrals, hypoallergenic testing offered, overnight camping and trail rides from our farm.*

## CALIFORNIA

ICHO# 4 Founding Lifetime, Breeder, Region2  
Allyn Brewer-Babitch  
Sky Horse  
15115 Clayton Rd, San Jose CA 95127 USA  
408-251-6788 Fax 408-254-3646  
allyn\_b@sindar.com

Lifetime, Breeder Region 2  
Frank G. Shipman  
FL Acres  
Sunnyside Road, Janesville, CA 96114 USA  
530-253-3378  
FL@citlink.net

ICHO# 350 Lifetime, Breeder Region 2  
Loretta L. Nielsen, PhD  
White Dragon Ranch  
757 Pine Way , Ramona, CA 92065 USA  
(760) 670-8006  
LLNielsenMW@gmail.com or  
whitedragoncurlymft@yahoo.com  
<http://www.whitedragoncurlymft.com>  
*Dominant Curly-Coated Missouri Fox Trotters*

ICHO# 113 Annual 2013 Breeder Region 2  
Sandcastle American Curlies  
Marge Murdock  
5360 Meadow-Croft Lane  
Pilot Hill, CA 95664 (530)823-3941  
margemurdock@att.net  
[www.freereindesigns.com/SACgaitedcurls](http://www.freereindesigns.com/SACgaitedcurls)

ICHO# 548 Annual 2013 Breeder Region 2  
Linda Nichols  
Mountain Trails Ranch

PO Box 8211 Woodland, California 95776 USA  
530-400-7568  
mtranch@me.com  
<http://www.mountaintrailsranch.com>  
*Dominant Curly Missouri Foxtrotters  
Standing ZGC Phoenix 1340-D and ZGC Tahoe  
1395-D  
Horses for Sale as well*

## FLORIDA

ICHO# 47 Lifetime, Breeder Region 6  
Terry Schmidt  
JT's Moon Shine Farm  
1070 Sandpiper Lane, Orange Park, FL 32073 USA  
904-269-2070 Fax 904-398-7073  
[teschmidt@comcast.net](mailto:teschmidt@comcast.net)

## GEORGIA

ICHO# 14 Founding Lifetime, Breeder Region 6  
Lisa Wytiaz  
BashCurl Farm 2  
137 Canter Way Jefferson, GA 30549 USA  
706-367-2807 Cell 706-983-9478  
[bashcurl.farm@prodigy.net](mailto:bashcurl.farm@prodigy.net)  
<http://www.bashcurlfarm-2.com>

## IDAHO

ICHO# 6 Charter Lifetime, Breeder, Region 1  
Heikki Kuster  
Cougar Mountain Ranch  
1976 Wrencoe Loop Road, Sandpoint ID 83864  
USA  
208-263-6131 Fax 208-263-8349  
heikki@cougarmountainranch.com  
<http://www.cougarmountainranch.com>

## ILLINOIS

ICHO# 306 Lifetime, Breeder Region 3  
Line McDonald  
8109 Mason Hill Road, Woodstock, IL 60098-7964  
USA  
815-479-0456 Cell 815-451-1926 line@n7us.net

## INDIANA

ICHO#3 Founding Lifetime, Breeder, Region5  
Sandra Hendrickson  
Greycoat Farm  
7979 Lantern Road Indianapolis, IN 46256-1827  
USA  
317-849-0897



[greycoat@comcast.net](mailto:greycoat@comcast.net)

<http://www.greycoatfarm.com/>

*Proven sporthorse breeding program with National, Regional and State awards for sire and offspring. ICHO/NACHR#2 Spartacus' offspring for sale-all ages and levels of training*

ICHO# 35 Annual 2013, Breeder, Region 5

Marv Woodke

Woodke's Walnut Woods

1466 E 550 N, Monterey, IN 46960

574-542-2457

[marvwoodke@gmail.com](mailto:marvwoodke@gmail.com)

*Stallion services: \*DCC Drifter, gaited, sorrel NA-CHR 50-D, NACHIP inspected.\* SLL Sir Patrick's Lil Chip, Flaxen roan sabino, gaited, ABC 3366, Color producer.*

ICHO # 497 Annual 2013 Breeder Region 5

Carrie Freeland

704 S 400 E, Winamac, IN 46996 United States

[red\\_roan77@yahoo.com](mailto:red_roan77@yahoo.com)

## IOWA

ICHO# 9 Founding Lifetime Breeder Region 3

Jacqueline Richardson

Richardson's Curly Horse Ranch

1259 310th Ave, Woodburn, IA 50275 USA

641-342-6180 Fax 641-342-1576

[curlhors@iowatelecom.net](mailto:curlhors@iowatelecom.net)

<http://www.Curly-Horse-Ranch.com>

ICHO# 367 Annual 2013 Breeder Region 3

Dori Sweet

1635 260th St., Webster City, Iowa

515-297-2009

[lalaland@wmtel.net](mailto:lalaland@wmtel.net)

<http://www.geezergardens-sweetlalaland.com>

*SLL Wiladys Lightning Storm ICHO# 1101-D MFTH-BA# 07-92119 I am raising gaited curly horses and currently have 4 horses for sale not all are gaited. two are large pony size.*

## KENTUCKY

ICHO# 247 Annual Family, Breeder 2013, Region 5

Shawn and Trevor Tucker

Three Feathers Native Curly Horses

2197 Alton Station Rd

Lawrenceburg, KY 40342 USA 502-839-3978 Cell

859-489-9105

[tuckerswoods@earthlink.net](mailto:tuckerswoods@earthlink.net)

<http://www.three-feathers.com>

Stallion- TFN Nagi Hanhepi Wi To, ICHO 1378-D

ICHO# 655 Annual Breeder 2013 Region 5

Marion Huurman

Hidden Cave Ranch Curly Horses

877 Thrasher Rd, Burkesville, KY 42717 USA

270-433-3225,

[marion@hiddencaveranch.com](mailto:marion@hiddencaveranch.com)

[www.HCRcurlyhorses.com](http://www.HCRcurlyhorses.com)

## MICHIGAN

ICHO# 51 Annual 2013 Breeder Region 5

Richard Jansen

803 Marshall Rd

Coldwater, MI 49036 517-279-8250

ICHO# 358 Annual Family 2013 Breeder Region 5

Joan, Jim, Mark Henning

Henning Stables

10160 W. Walton Rd., Blanchard, MI 49310 USA

989-561-2935 Cell 989-854-1025

[JHenning\\_joanie@yahoo.com](mailto:JHenning_joanie@yahoo.com)

[www.henningstables.webs.com](http://www.henningstables.webs.com)

*Standing at Henning Stables: WWW One Curly Drifter ICHO 1262-D*

ICHO# 651 Annual 2012/2013 Breeder Region 5

Deborah Adams

Rocking A Trail Horses

5401 S. Jerome Rd. Pittsford, MI 49271

517-398-2768

[debadams1986@gmail.com](mailto:debadams1986@gmail.com)

## MINNESOTA

ICHO# 391 Annual 2013 Breeder Region 3

Janice Voss-Crosby

14595 147th Street Waseca, MN 56093 USA

507-835-5337

[janice@twistedoaksfarm.com](mailto:janice@twistedoaksfarm.com)

[www.twisted-oaks-farm.com](http://www.twisted-oaks-farm.com)

*Standing Hawk's Midnite Shadow ICHO pending, Live Cover/AI, offering quality curly horses.*

## MONTANA

ICHO# 5 Founding Lifetime, Breeder, Region 1

Donna G. Vickery

Crow Country Curly Horses

830 Kelly Circle Shepherd MT 59079 USA

406-861-6854



[buckingv@midrivers.com](mailto:buckingv@midrivers.com)  
<http://www.curlyhorses.com/>

### NEVADA

ICHO# 564 Lifetime, Breeder Region 2  
Peter Damele  
Ackerman Ranch NV 89310 USA

ICHO# 565 Lifetime Breeder Region 2  
Tom Damele  
Dry Creek Ranch NV 89310

ICHO# 207 Annual 2013 Owner Region 2  
Sue Davis  
555 Wilcox Ranch Rd  
Reno, NV 89510  
(775) 475-2250, cell (618)670-4963  
[ilovecurlies@hotmail.com](mailto:ilovecurlies@hotmail.com)  
[www.hdequine.com](http://www.hdequine.com)

ICHO# 518 Annual 2013, Breeder, Region 2  
Joan Olson  
1760 Manzanita Ln Reno, NV 89509, USA  
(775) 475-2250  
[ilovecurlies@hotmail.com](mailto:ilovecurlies@hotmail.com)  
[www.hdequine.com](http://www.hdequine.com)  
*Standing: WW Peter Lakota ICHO 870-D  
Warrior Starberndt ICHO 1258-D  
Maximums Pride ICHO 964-D  
Trotting Curlies and Curly Foxtrotters for sale. Hypo-  
allergenic testing available.*

### OKLAHOMA

ICHO #344 Annual 2013 Breeder Region 4  
Adena Warner  
Land Run Curlies  
6801 N Bryant Ave., Edmond, OK 73034 USA  
[adenaw34@yahoo.com](mailto:adenaw34@yahoo.com)  
[www.landruncurlies.com](http://www.landruncurlies.com)

### OHIO

ICHO# 16 Founding Lifetime, Breeder Region 5  
Kristen Cox  
Lil bits of Heaven  
568 Forest Ridge Court Cincinnati, OH 45244 USA  
513-688-7385  
[kristenjcox@yahoo.com](mailto:kristenjcox@yahoo.com)  
<http://www.geocities.com/kristenscurlies>

### OREGON

ICHO# 723 Annual 2013-2014 Breeder Region 1  
Stribling Ranch

Gretchen Stribling  
1350 South M Street, Lakeview, Oregon 97630  
530-946-0803  
[gretchen@striblingranch.com](mailto:gretchen@striblingranch.com)  
[www.striblingranch.com](http://www.striblingranch.com)  
*I raise ICHO Gaited Curly Horses, ABC Curly Horses, Gypsy Vanner Drum Curly Horses and a few Gaited Gypsy Vanner Curly Crosses.*

### PENNSYLVANIA

ICHO# 17 Lifetime, Breeder Region 5  
Amy Stein Seldom Creek Farm  
638 Kralltown Rd. East Berlin, PA 17316 USA  
717-292-0330 Cell 717-683-7592  
[Willwind@aol.com](mailto:Willwind@aol.com)  
<http://www.seldomcreek.com>

### TENNESSEE

ICHO# 142 Lifetime, Breeder Region 6  
Robert & Ruth Fleming  
221 Hope Lane, Dunlap, TN 37327 USA  
423-554-3069  
[fiberdyn@volstate.net](mailto:fiberdyn@volstate.net)

ICHO# 253 Lifetime Breeder, Region 6  
Dianna Fleming  
221 Hope Lane, Dunlap, TN 37327 USA  
423-554-3069  
[dianna@volstate.net](mailto:dianna@volstate.net)

ICHO# 652 Annual 2013/2014 Breeder Region 6  
Carrie Wakefield  
1911 Ballplay Rd  
Madisonville, TN USA  
423-442-6368  
[carrieellis1982@yahoo.com](mailto:carrieellis1982@yahoo.com)

### TEXAS

ICHO# 22 Founding Lifetime, Breeder Region 4  
Donna Hedicke  
Cloudcroft Curlies  
P. O. Box 640175 El Paso, TX 79904 USA  
505-824-1684 505-430-5779  
[dhedicke@earthlink.net](mailto:dhedicke@earthlink.net)  
<http://www.ranchodecolores.com>

ICHO# 145 Lifetime, Breeder Region 4  
Jan Wolfe  
Whoa Ranch  
2 Ledgeaway, Austin, TX 78746 USA  
512-329-9103 Cell 512-970-9653 Fax 512-329-6009  
[jowolfe@austin.rr.com](mailto:jowolfe@austin.rr.com)



ICHO# 188 Lifetime, Breeder Region 4  
Keith & Mikki Millsap  
Keith Millsap Farm  
RR 1 Box 26, Higgins, TX 79046 USA  
806-852-2166 Cell 806-886-2633 Fax 806-852-2365  
[mikkimillsap@yahoo.com](mailto:mikkimillsap@yahoo.com)

ICHO# 502 Lifetime Breeder Region 4  
Jennifer Quilkey  
Lazy Q Curlies LLC  
5504 Ravine Ridge Cove, Austin, TX 78746 USA  
512-751-1867  
[jquilkey@mac.com](mailto:jquilkey@mac.com)

ICHO# 127 Annual 2013 Breeder Region 4  
Annise Finch  
4700 Deer Crossing Rd, PO Box 100, Troy, TX  
254-624-4535  
[afinch@deercreekfarms.com](mailto:afinch@deercreekfarms.com)  
[www.deercreekfarms.com](http://www.deercreekfarms.com)  
*Standing: \*DCC Sioux Warrior ICHO/NACHR 432-D  
Boarding, Breeding, Training, Lessons and Sales*

ICHO# 481 Annual 2013, Breeder, Region 4  
Angela (Angie) Gaines  
Golden Curls Ranch  
7480 CR 4095, Kaufman, TX 75142 USA  
214-794-1776  
[angie@goldencurlsranch.com](mailto:angie@goldencurlsranch.com)  
<http://www.goldencurlsranch.com>  
*Standing at stud- Renegait Chesterfield ICHO 1203-D,  
Chester has Warrior, Damele, Mead and Walker  
T bloodlines.. - AI only*

ICHO# 538 Annual 2012/2013 Breeder Region 4  
Stag Creek Farm  
Barbara Carroll  
2500 County Rd 116, Comanche, TX 76442  
[curlies@cctc.net](mailto:curlies@cctc.net)  
[www.stagcreek.org](http://www.stagcreek.org)

#### **UTAH**

ICHO# 517 Lifetime, Breeder, Region 2  
Rebecca A. Oldham  
MO Foxtrotters  
10551 South Covered Bridge Canyon Dr, Spanish  
Fork, Utah 84660  
801-873-3249  
[oldhambecky@yahoo.com](mailto:oldhambecky@yahoo.com)  
[goldngaitfoxtrotters.com](http://goldngaitfoxtrotters.com)

*Home of ZGC Dallas ICHO# 878-D, MFTHBA 06-89252 dominant gene, 15.2 chestnut Curly stallion.  
MO Foxtrotters has dual registered dominant Curly  
foxtrotters. Excellent for western trail and mountain  
riding. Horses for sale.*

#### **VERMONT**

ICHO# 59 Charter Lifetime, Breeder Region 5  
Betsy Lirakis  
Top O The Hill Farm  
153 Kirk Meadow Road, Springfield, VT 05156 USA  
802 885-9101  
[top@vermontel.net](mailto:top@vermontel.net)  
<http://www.vermontel.net/~top/index.html>

ICHO# 112 Annual 2013 Owner, Breeder Region 5  
Green Mountain Curlies  
Adria Halstead-Johnson  
910 US Route 2, Marshfield, VT, USA  
802-426-3136  
[vtcurlies@fairpoint.net](mailto:vtcurlies@fairpoint.net)  
<http://greenmountaincurlies.com>  
*\*Tall Trees Misty's Beau, buckskin sabino stallion,  
NACHR 352-D, breeding for versatility. Horses for  
sale.*

#### **VIRGINIA**

ICHO# 20 Charter Lifetime Breeder Region 5  
Sandra Bennett  
Thistle Cove Farm  
261 Cove Road Tazewell, VA 24651 USA  
276-988-4121  
[thistlecovefarms@gmail.com](mailto:thistlecovefarms@gmail.com)  
<http://www.thistlecovefarm.com>

ICHO# 57 Charter Lifetime, Breeder Region 5  
Jeff and Mary Pelkey  
Mountain Creek Curlies  
286 R R Eppes Road, Meherrin, VA 23954 USA  
Cell 804-380-6904  
[horses@mountaincreekcurlies.com](mailto:horses@mountaincreekcurlies.com)  
<http://mountaincreekcurlies.com>  
*Standing \*Mocha Java ICHO 871-D, Stallion, height  
14.2h Add Style, Curls and Athleticism. Great work-  
ing disposition. Horses for Sale.*

ICHO# 70 Lifetime, Breeder Region 5  
Joyce Engasser  
Little Bits of Heaven Stables  
4151 Michaux Grant Rd, Powhatan, VA 23139 USA  
804-598-9380 [HeartJoyce@aol.com](mailto:HeartJoyce@aol.com)



## WASHINGTON

ICHO# 2 Founding Lifetime, Breeder Region 1  
Ellen Bancroft  
Bancroft Curly Ponies & Minis  
15521 216th Ave. NE, Woodinville, WA 98077 USA  
425-788-9852  
[ebancroft@mindspring.com](mailto:ebancroft@mindspring.com)  
<http://www.mindspring.com/~ebancroft>

ICHO# 386 Lifetime Breeder, Region 1  
Sheryl D'Uva  
Cozy Nook Curly's  
537 Hotchkiss Rd, Colville, WA 99114 USA  
509-684-1695 Cell 509-680-1077  
[cozynookcurlys@gmail.com](mailto:cozynookcurlys@gmail.com)  
<http://www.cozynookcurlys.com>  
*Future stallion CNC Poetic Motion Xpress, aka Moe, Breeding for Multiple Disciplines, and horses that will suit every family member. Allergy testing available*

ICHO# 397 Annual 2013 Breeder Region 1  
Elisabeth Mattke  
4217 N Kenney RD, Otis Orchards, WA 99027  
425-330-3341  
[liz@travelingmoonranch.com](mailto:liz@travelingmoonranch.com)  
[www.travelingmoonranch.com](http://www.travelingmoonranch.com)  
*Breed and raise Curly Sporthorses. Standing DCC Traveler - #142-D. Traveler is a 2 time Horse of the Year award winner for Combined Training, National Performance Horse, Grand Champion and National Versatility Horse, Grand Champion. His offspring are calm, intelligent and athletic.*

ICHO# 573 Annual 2013-2014 Breeder Region 1  
Crystal Lofts  
Hidden Meadow Curly Horses  
2146 B Upper Dry Creek Rd., Chewelah, Wa. 99109  
509-935-7570/509 675-5733  
[cryslfts152@yahoo.com](mailto:cryslfts152@yahoo.com)  
<http://www.hiddenmeadowcurlyhorses.weebly.com>  
*Standing at Stud: ARC Nissi 1074-D*

ICHO# 581 Annual 2013 Breeder Region 1  
Kimberlie Lightfoot  
4731 Selfs Rd Cashmere, WA 98815 USA  
(509) 782-9653 home (509) 630-3204 cell  
[klight@frontier.com](mailto:klight@frontier.com)  
*Lightfoot Boys and Curls Standing: DSF Colby Britches ICHO Reg #1393-D LBC Kiss Paladin Britches ICHO Reg # 1500-D Breeding, raising and training amazing Curlys for everyone.*

ICHO# 656 Annual Breeder 2013 Region 1  
Tina Baumgartner  
61104 N 43 Pr NW, Benton City, WA 99320  
[tagategirl@frontier.com](mailto:tagategirl@frontier.com)

## WYOMING

ICHO# 286 Lifetime, Breeder Region 1  
Don Bosman and Ellen Southwell  
Bit-O-Wy Horses  
4918 Cochise Rd, Cheyenne, WY 82009 USA  
307-778-7826  
[bitowy@yahoo.com](mailto:bitowy@yahoo.com)  
<http://www.bitowy.com>  
A different kind of horse program. Where we don't sell a trained horse but train the human to train their horse and throw the horse in as a bonus.

## CANADA

### Alberta

ICHO# 64 Charter Lifetime, Breeder Region 7  
Deanna Johnson  
Sunnybrook Stables  
Box 35, Sunnybrook, AB T0C 2M0 CANADA  
780-789-2125  
[curlys@sunnybrookstables.com](mailto:curlys@sunnybrookstables.com)  
<http://www.sunnybrookstables.com/>

ICHO# 449 Annual 2013, Breeder, Region 7  
Mary Stewart  
Box 421 High Priarie, AB T0G 1E0 CANADA  
780-523-2192  
[fyreside@gmail.com](mailto:fyreside@gmail.com),  
[www.firesideminiaturecurlyhorses.com](http://www.firesideminiaturecurlyhorses.com)  
*AERO, 40" black bay stallion, Mocha 36" buckskin pinto stallion. Curly miniature and Curly ponies for sale occasionally.*

### British Columbia

ICHO# 109 Annual 2013-2014 , Breeder Region 7  
Shelly White  
25210 Wildhorse Road,  
Summerland, BC V0H 1Z3 Canada  
[sm.white@shaw.ca](mailto:sm.white@shaw.ca)  
<http://www.curlystandardplace.com>  
*Standing at stud: \*Sandman's Magic 251-D and \*BCF Icon 1436-D. Sporthorse breeding program and all around horses for sale.*

ICHO# 661 Annual 2013 Breeder Region 7  
Michele Bowley  
Ronsterosa Ranch  
8920 Skimikin Rd., Chase, BC VOE 1M1 Canada



250-679-8345 r  
onsterosa@telus.net

ICHO# 669 Annual 2013 Breeder Region 7  
Anastasia Ivanusic  
25210 Wildhorse Road, Summerland, BC Canada  
250 460-1367  
aivanusic@hotmail.com  
<http://www.curlystandardplace.com>  
*Co-owner and breeder of Curly horses in Summerland, BC at the Curly Standard Place. We breed for sport, endurance and pleasure. Standing \*Sandman's Magic ICHO 251-D and \*BCF Icon ICHO 1436-D*

ICHO# 549 Annual 2013 , Breeder, Region 7  
Sereena Pavich  
Swan Creek Farms Land and Livestock  
Box 296, Lamont, Alberta, T0B 2R0 Canada  
780-895-7772 Fax 780-895-7707  
swancreekfarms@yahoo.ca  
<http://www.swancreekandalusians.ca/>  
*Breeding for Sport, Performance, Ranch and family Curly horses, for all levels and ages. Breeding and Sales. Ontario*

ICHO# 110 Annual 2013-2014 Breeder Region 7  
Patricia Rosborough  
797066 3rd Line E, Mulmur, ON, Canada L0N 1M0  
519-925-2545  
trish@yanagistables.com  
[www.yanagistables.com](http://www.yanagistables.com)  
*\*Y.S. Kinyobi ICHO/NACHR# 1066-D, ABC and CSI Registered. Sport Horse. Offspring offered for sale.*

ICHO# 398 Annual 2013, Breeder, Region 7  
Florence Martin  
Flora Lake Curly Horses  
7830 Fourth Line, RR#2 Wallenstein, ON N0B 2S0  
Canada  
519-638-5819 Fax 519-638-5668  
floralake@mwpol.ca  
<http://www.floralakecurlyhorses.com>  
*We strive to raise quality Curly horses from sport horses to trail buddies.*

ICHO# 443 Annual 2013 Breeder, Region 7  
Cindy Kyle  
The Little Curly Gaits  
8168 Sixteen Road, Caistor Center, ON L0R 1E0  
CANADA  
905-957-7888

kenk7888@gmail.com  
<http://www.miniaturecurlies.com>  
*Breeders of Quality "Little Guys" Curly Miniature horses and ponies. They are friendly, willing, intelligent with sweet temperaments and proper conformation.*

**Quebec**  
ICHO# 235 Annual 2013-2014 Breeder Region 7  
Isabelle Checroune  
249, ROUTE 221 Sud  
Lacolle Quebec J0J 1J0 Canada  
450-246-4641  
info@curlyquebec.com  
<http://curlyquebec.com>  
*Standing at stud, 1. Namaspamoos Hélios de Sally ICHO# 1264-D 16HH bay tobiano sabino, negative N/N for CA. Sporthorse type.2. Oakesmuir Chimo ICHO# 447-D 15HH rabicano liver chestnut. Tested negative N/N for CA. We sell and export our Curlies worldwide since 2002. All our horses are registered and DNA tested.*

## INTERNATIONAL

Australia  
ICHO# 667 Annual 2013 Breeder Region 8  
Helen Barrenger Yarraleigh Curly Horse Stud  
99 Hoveys Road, Napoleons, Vic 3352 Australia  
03 53 413 101 fax 0400 908 474  
thebarrengers@bigpond.com

**France**  
ICHO# 40 Charter Lifetime, Breeder Region 8  
B. & F. Prevost  
Le Ranch du Mas de L Air  
Chemin du Mas de L'air 13 440 Cabannes  
FRANCE  
(+33) 04 32 62 84 42 Fax(+33) 04 32 62 84 42  
b.prevost@lemasdelair.com  
<http://www.lemasdelair.com>

ICHO# 417 Lifetime Breeder Region 8  
Aline and Jeroen Verschuren  
JAK CURLY FRANCE  
La Ville aux Lièvres - 56220 PLUHERLIN, BRITANNY, FRANCE  
(33)297 490 479 Cell 00(33)681 230 384  
jakcurly@orange.fr  
<http://www.jakcurly.com>  
*Frozen semen available Europe wide Standing BCF \*SPARCTACULAR SPLASHES ICHO 11-D. Approved twice as First Premium Stallion. Champions*



*DRAKVALLMONS \*Ite O Maguzu 1310-D, (Pony) and GOLDEN GAITS \*Kokopelli 1452-D (gaited). DCC \*VEGAS, ICHO 459-D, (MFT gaited) Pony and horse size curlies available.*

ICHO# 560 Lifetime, Breeder Region 8  
Karine Maglia  
EDACURLY  
Trohoar, 22110 Rostrenen, France  
edacurly@yahoo.fr

ICHO 561 LIFETIME Breeder Region 8  
Sandra and Louis Philippe Guillemot  
Haras Heiligenmatt  
1a rue de la Zinsel 67330 Ernosheim les Savernes,  
FRANCE  
haras-heiligenmatt@orange.fr  
<http://www.curly-horses-satheca.fr/>  
*Stallion : Vigaro NACHR 1555D, Ebony Twist / Gringo's Copper D lines, chestnut, approved for France and Europe, live cover + fresh and froze semen available.*

ICHO# 353 Breeder OnCurls  
Sophie Allieux  
Elevage Desys  
La Trouche, St Jean de la Motte 72510 France  
0243454415  
allieux\_sophie@yahoo.fr  
<http://chevalcurly.fr/>  
*Stallion: YS KUMO Curly Sporthorse, foals available*

ICHO# 370 Breeder OnCurls  
Emmanuelle Leboucher  
Beausoleil De Quily 56230 Questembert  
06.62.94.01.85  
ecuries@curly-quily.fr

### **Germany**

ICHO# 597 Lifetime, Breeder Region 8  
Marion Duehrig  
Gscheidbuehl 2, 94234 Viechtach Germany  
dmarion@web.de

ICHO# 371 Annual 2013 Breeder Region 8  
Nicole Schoen  
Breite Str.24, 29221 Celle, Germany  
Nicoleunddavia@t-online.de

ICHO# 469 Annual 2013 Breeder Region 8  
Susanne Heid  
Hinterstauten 11, Oberstauten, D-87534, Germany  
susanne@rainwood.de  
[www.Rainwood-Ranch.de](http://www.Rainwood-Ranch.de)  
*Standing for Stud: \*ZGC Durango #998-D. Breeding GAITED & spotted Curly (Fox Trotting) Horses*

ICHO# 595 Annual 2013-2014 Breeder Region 8  
Karin Sterly  
Zur Quelle 3, OT Wittenborn, 17099 Galenbeck,  
Germany  
karinsterly@web.de

ICHO #657 Annual 2013 Owner Region 8  
Ulrike Voss  
Pastoratsweg10, D-27476 Cuxhaven Germany  
Voss.ulrike@vosstischlerei.de

### **Netherlands**

ICHO# 231 Annual 2013, Breeder Region 8  
Claudia Spanjaard  
Landdrostlaan 124, 7327 GN Apeldoorn,  
Netherlands  
claudia.spanjaard@gmail.com

### **Norway**

ICHO# 13 Annual 2013 Breeder Region 8  
Lene Jensen  
Jensens Curlyhester  
Hvittingfossv 373 Holmestrand NO-3080 NORWAY  
(+47) 33051422 Cell (+47) 93803906 Fax(+47)  
22956262  
Lene@curly.no  
<http://www.curly.no>  
*Quality Curlies for sale, gaited, ponies, all around.*

ICHO# 238 Annual 2013, Breeder Region 8  
Sissel Hvitsand  
Dalshaugen Curlyhester  
Dalshaugen, Ler, NO-7234 NORWAY  
(+47) 72877295  
[sisselhvitsand@hotmail.com](mailto:sisselhvitsand@hotmail.com)

ICHO# 514 Annual 2013 Breeder, Region 8  
Reidun Stromseng Fagerhaug  
Curlyhester Sordalen, Bardu, NO-9360 NORWAY  
Cell (+47) 90117946  
reidis2000@yahoo.no



## **Spain**

ICHO# 551 Annual 2013 Breeder Region 8  
Antonio Barcelo Artigues  
3a Volta 3040 Camide Son Negre, 07208 FeCantx,  
Espana SPAIN  
34 97158 29 20 fax 34971827579  
Son Menut  
sonmenut@sonmenut.com  
[www.sonmenut.com](http://www.sonmenut.com)

## **Sweden**

ICHO# 89 Annual 2013-2014, Breeder, Region 8  
Marianne Bornemark  
Gunnarp 130, 24040 Tjornarp, Skane, Sweden  
+4645162424 cellphone +46702454040  
mbornemark@hotmail.com  
[www.naturefarm.se](http://www.naturefarm.se)  
*Standing Gaited Stallion Kansas Dream*

## **UK**

ICHO# 480 Annual 2013-2014 Breeder Region 8  
Louise Parker  
Trevor Hall, Trevor Hall Road, Llangollen, Denbigh-  
shire  
LL20 7UP, United Kingdom  
louiseparker@trevorhall.com  
*Stallions: Warrior Lynx \*28-D Western, FL Aishihik  
Jetstar\*1338-D Sport/Western, Pirate's Little Bucca-  
neer EB\*386-D Sport Pony. Largest UK Breeder of  
Curly Horses & Ponies. Riding/driving and young  
stock for sale.*