



# 2016 SUMMER ICHO GAZETTE

## International Curly Horse Organization

322 Tulie Gate Road, Tularosa, NM 88352

office@curlyhorses.org

www.ichocurlyhorses.org

### SUMMER 2016

#### ICHO BOARD

· **Pres. Joan Henning**  
Region 5  
JHenning\_joanie@yahoo.com

· **VP Trish Rosborough**  
Region 7  
trish@yanagistables.com

· **Treas. Donna Hedicke**  
Region 4  
dhedicke@earthlink.com

· **Registrar Jackie Richardson**  
Region 3  
registrar@curlyhorses.org

· **Web Manager Sheryl D'Uva** Region 1  
Region 1  
cozynookcurlys@gmail.com

**Becky Oldham**  
Region 2  
oldhambecky@yahoo.com

· **Terry Schmidt**  
Region 6  
teschmidt@comcast.com

**Sandra Hendrickson**  
Region 5 At Large  
greycoat@comcast.net

· **Janice Voss-Crosby**  
Region 3 At Large  
crosbyvoss@yahoo.com

· **Marianne Bornemark**  
Region 8  
mbornemark@gmail.com



### “CURLY AT THE BEACH COLORING PAGES!”

**Just print and color. One size for Kids and one for older Kids and Adults. Have fun! Show off your art work on ICHO on Facebook (see pgs 12-13).**

Greetings ICHO members! Closing summer and entering Fall, a favorite time of year to trail ride your Curlies! The Fall ICHO AGM will be an online conference, October 16, 2016 at 1pm EST. If you would like to have an item on the agenda, please email me, jhenning\_joanie@yahoo.com. The online gathering will give all members a chance interact and view items discussed, a chance to share, contribute, and see what other ICHO member's concerns and ideas are. We would love to hear from you, even if just a Hello! See you on October 16, Joanie Henning, ICHO President, and Angel Leggs, ICHO# 1263-D.



Visit the link below to vote for the ICHO Calendar Cover Contest! The Deadline for voting is September 23, 2016, hurry! The choices are beautiful!

<http://www.ichocurlyhorses.com/2017-calendar-cover-contest.html>



## GAZETTE AD DEADLINE

We now have a new Gazette ad deadline schedule for submitting ads as follows:

WINTER: Dec 15

SPRING: Mar 15

SUMMER: June 15

FALL: Sept 15

Ads that are received after the deadline will be run in the next following issue. Payments must also be made before the deadline. All ads and payment must be sent to the office. Thanks!

ARTICLES- We are always looking for interesting articles for the Gazette. The article could be about training, health tips, an interesting story about a Curly or anything of interest horse related. Please send all articles to the office before the deadlines. Awaken the writer within you!



**GAZETTE SCHEDULE**

-  **WINTER February**
-  **SPRING May**
-  **SUMMER August**
-  **FALL November**

Submit Ads & Payment to: [office@curlyhorses.org](mailto:office@curlyhorses.org)

**Ad & Payment Deadlines:**  
[Winter Dec 15](#) [Spring Mar 15](#) [Summer Jun 15](#) [Fall Sep 15](#)

## INSIDE THIS ISSUE

*Fecal Egg Counts.....pgs 4-5*

*French Inspection ICAMSS horses....pgs.6-11*

*Color Pages.....pgs 12-13*

### ICHO now offers DNA testing for:

|                                  |                |
|----------------------------------|----------------|
| <i>Genetic Panel</i>             | <b>\$99.00</b> |
| <i>Ancestral only TX A&amp;M</i> | <b>\$25.00</b> |
| <i>Parentage Only U of KY</i>    | <b>\$30.00</b> |
| <i>Lp color TX A&amp;M</i>       | <b>\$35.00</b> |

To obtain a mailed copy of the Gazette, there is now a \$30.00 yearly fee. You can always view the Gazette online for free on our webpage—<http://ichocurlyhorses.org> in the Members Only section and print a copy for yourself.

## Gazette Ad Specials!

**Stallion Station Ad— only \$10.00 per issue, \$40.00 for the year, color ad.**

**Business Card Ad— only \$10.00 per issue, \$40.00 for the year, color ad**

**All color Ads at Black and White Prices! All Gaz Color Ad fees reduced!!**

**Full Page Color \$40.00, 1/2 Pg Color \$20.00, 1/4 Pg Color \$10.00, Classified \$10.00**

Submitting ads: \*Pay for ads online on our webpage— <http://ichocurlyhorses.org>

**All ads must be copy ready** in word doc format or jpg, png. Since we have reduced our prices we need the ads in ready to print format. For photos png is preferred since it has the best resolution. We can no longer accept pdf format because it does not insert clearly for the Gazette editing process.

All Ads must be sent to the office with payment. Ads also appear on the ICHO webpage.

Thanks! [office@curlyhorses.org](mailto:office@curlyhorses.org)

Gazette editor— Joan Henning

*Our deepest condolences to the Hendrickson family on the passing of ICHO member, Thomas Atherton Hendrickson (1927-2016), husband of founding member, Sandra Hendrickson.*



Our Sincere  
Condolences to the  
Sue Nash Family.



Our member Sue Nash  
passed away in May while in  
Spain.

She will be remembered with fond  
memories, you may know her  
Curlies, Get Out of Dodge  
"Gunsmoke" and his offspring.

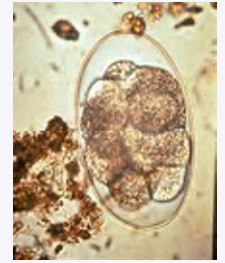
ICHO AGM Online conference  
October 16, 1pm EST  
ICHOCHAT@yahoogroups.com

See you there!





# ? Fecal Egg Counts ?



An armchair introduction to performing your equine's fecal egg counts.

By Joan Henning

For years, I wished to further decipher the mystery of de-worming my horses. Doing a regular schedule of de-worming always seemed to be a hit or miss approach to me. I knew some horses needed worming more than others, and others less,..... which wormer, when to worm, wormer resistance, the questions seemed to fall into an abyss of mystery. It seemed the logical direction was to use fecal egg counts (FEC, please note that FEC's are not comprehensive to your horse's parasite health) as one of the "tools" to help comprehend the status of parasites in a horse. With several horses, it was most practical to learn to do it myself. So, armed with microscopy experience and a microscope, I began to research my questions, practice methods, research some more, and arrive at a protocol that I felt comfortable with, albeit, amateur. I am not a veterinarian, or veterinarian assistant, or veterinarian anything. I am a biologist and a teacher. This is my personal experience, my journey, which is on-going, to better provide for my horses and their worming protocol, or possibly just to feed my curiosity about what is in their fecal matter. I am not a professional in de-worming, parasitology, etc. But if you love microscopy, this is an interesting amateur activity that may even give some insight into your horse's parasite status.

I am comfortable with a microscope and have the supportive materials to perform microscopy. My background in teaching bacteriology and microbiology labs at the university level during my graduate assistant years, led to teaching with a microscope for the next 30 years in my classroom.

To begin, you must have access to a reliable microscope and know how to use it. I found that overall magnification at 100x was best for me, and since I didn't have a McMaster's gridded slide, I counted eggs in the microscope's Field of View at 100x instead. This is a work in progress for me, I'm having fun and I do not have all the answers! But I think I am understanding who is carrying a larger egg population (bigger shedders) and recognizing some of the species in these populations.

Materials Used (Figure 1):

Microscope (at least 100x capacity)

Microscope slides and cover slips

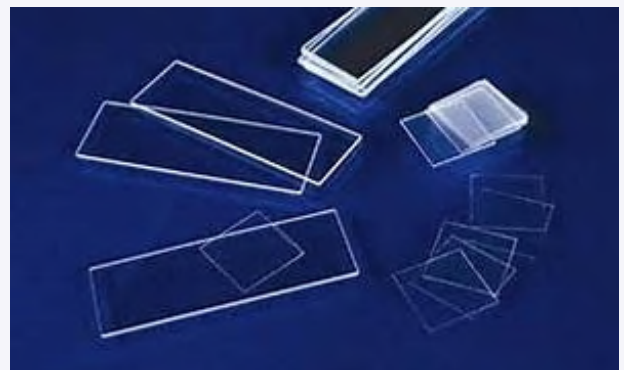
Toothpicks

Pipette (eye dropper)

Collection materials

water

Figure 1. Microscope slides and cover slips.

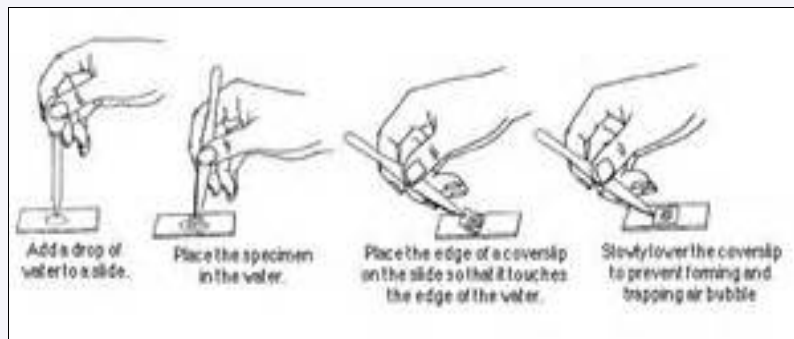


## Procedure:

Collect small pinches of fresh fecal material from several manure balls from an individual horse, gently mix these pinches together in a clean container (ex. plastic baggie labeled with horse's name).

Prepare a Wet Mount slide for the microscope. To do this, place a clean drop of water on the slide with a pipette or eye dropper. Using a toothpick or similar clean instrument, retrieve a very small sample of mixed manure and stir it gently in the droplet of water on the slide. If you are not familiar to microscopy, "less is more." It takes a very small smear to give ample specimen viewing! Apply a cover slip. See Figure 2 below for a tutorial on preparing a Wet Mount.

Figure 2. Preparing a simple Wet Mount for microscopic observation. Note the angle of the cover slip placed over the water droplet and specimen mixture. This will help reduce air bubbles in the field of view.



Magnify to 100x and count the number of eggs in this field of view. They will appear round or oval shaped, they may have structures in them (Figures 3 and 4). Do not expect to see wriggling worms, you are searching for "round" shapes. Large, dark rimmed, round shapes may be air bubbles and easily mistaken for worm eggs (Figure 5). Record how many eggs you have observed in a field of view to use as comparison or averaging views.

Tips: Use only fresh samples, collect and observe immediately if you can. Make sure micro-



Figure 3. Strongyle and other equine parasite eggs. Note the structures in the Strongyle egg.



Figure 4. An equine Strongyle egg.

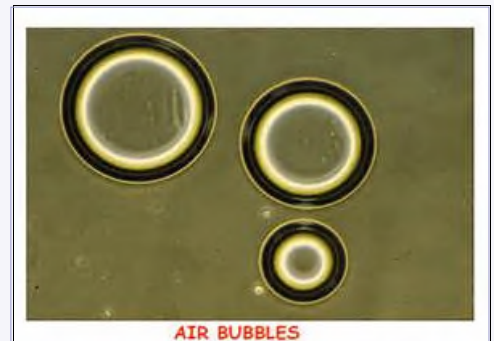


Figure 5. Microscopic air bubbles, these are not fecal eggs. Note the dark, thick rim, very symmetrical circles.

scope slides and cover slips are washed and cleaned well after each use.

If you have very different count numbers from the same sample, repeat procedure with a new sample of manure.

Read all the literature you can! There are comprehensive instructions from professionals to performing FEC's. I have simplified an "armchair" version for my own personal use. It is best to view for eggs before you worm, and then again about two weeks after, and you should see a dramatic difference!

**CONGRATULATIONS** to the Owners and Curlies of the French Inspection (FCHIP/IFCE) and the approval of these ICAMS horses! Well Done!



**JAK Beedies Splash 1470-D ICAMS**



**CC Heart N Soul Echo 1219-D  
ICAMS**

***\*\*Become an ICHO member OCT 1 and receive the rest of 2016 and all of 2017 Membership!\*\****



**Top Modele 1140-D ICAMS**



**Trevor Hall Cariad 1407-D ICAMS**



**JAK Boreal Maguzu 1463-S ICAMS**



**CC Skygrey Lady Spark 1451-D ICAMS**



**LBH Shadow of Colors 1371-D ICAMS**



**Adorable Kale Desys 1450-D ICAMS**



**Golden Gaits Wakanda 1938-D ICAMS**



**JAK Artic Pirate 1313-D ICAMS**





**Golden Gaits Kokopelli 1452-D ICAMS**



**Curly Shakook of JAK 1580-D ICAMS**



**Bahia Splash of JAK 1471-D ICAMS**



**Golden Gaits Anasazi 1220-D  
ICAMS**



**Captain Mag of JAK 1574-D ICAMS**



**Bretzel de Quily 1527-D ICAMS**



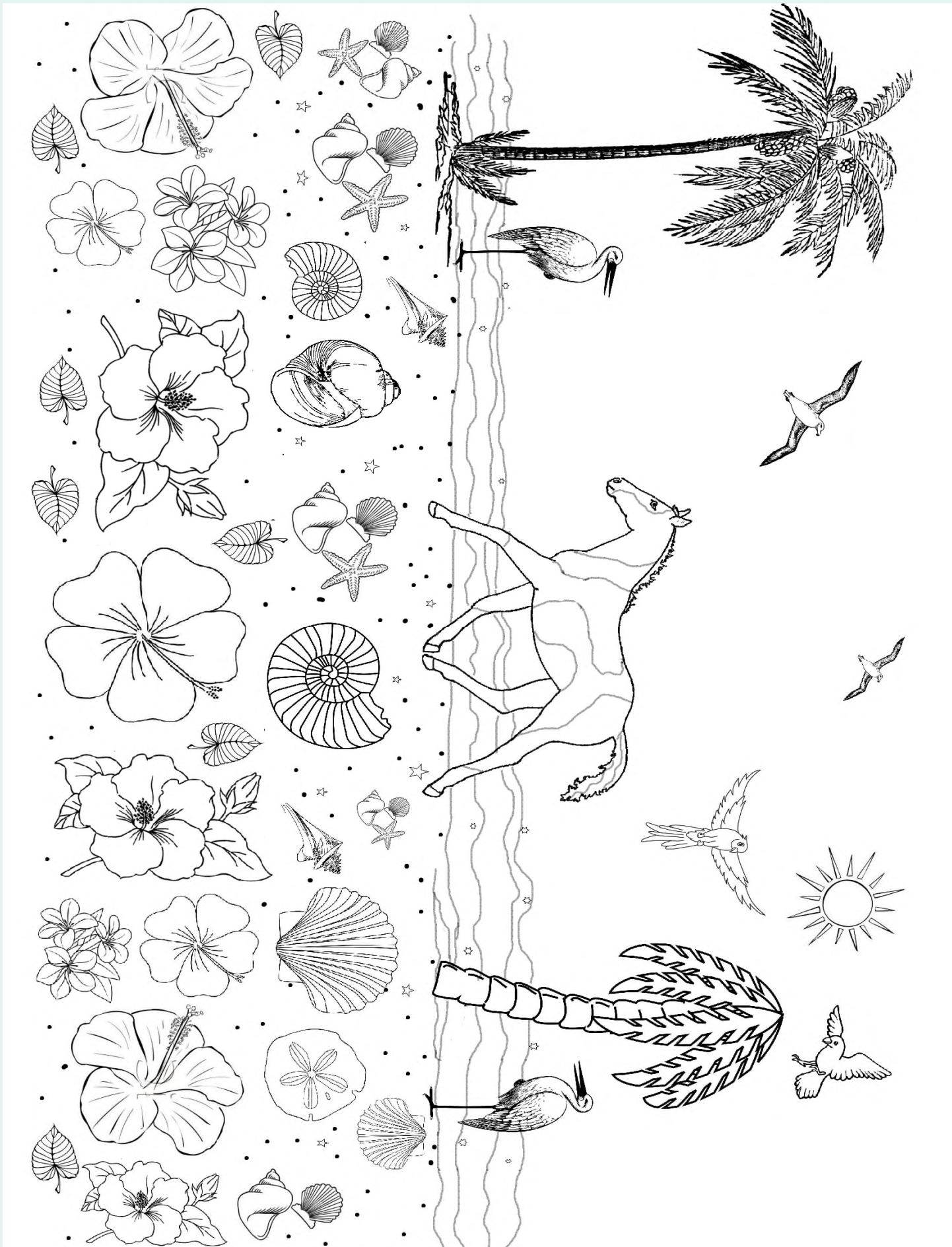
**HCH American Woman 948-D  
ICAMS**



**BCF Sparctacular Splashes 11-D ICAMS**



**Corigan de Findil 1605-D ICAMS**



*Curly at the Beach*

